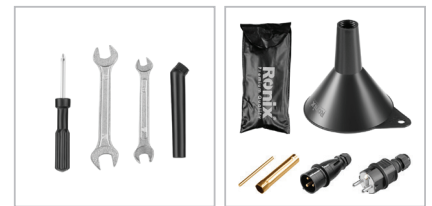
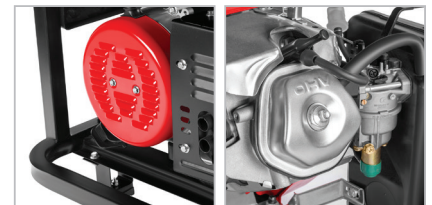


Gasoline Generator
6KW

RH-4706

- 390cc, 4-Stroke high power 6kw engine with outstanding performance
- Large 28 Liter full steel fuel tank provides up to 10 hours of run time
- Includes a selection of outlets for maximum compatibility in your applications including: two 220V AC outlets and one (12V) DC outlet
- Includes a voltmeter for measuring output voltage
- Special compact design for ease of use and reliable portability
- Covered, circuit breaker outlets for added protection
- Minimum sound and vibration in indoor usage
- 100% copper-wound generator head allows continuous operation without overheating
- Low oil alerting system for more protection of motor and longer lifetime
- Ideal for workshops and light-duty industrial usage



Model	RH-4706		
	Model	HP188 FE	
Engine	Type	4stroke Air Cooled Engine	
	Displacement	390cc	
	Rated Power	13HP	
	Ignition System	CDI	
	Start	E-Start	
	Fuel Tank Capacity	28L	
	Continuous working	10H	
	Fuel type	Unleaded Petrol	
	Generator	Type	Single Phase
		Rated Voltage	220V
Frequency		50Hz	
Winding Material		Copper	
Rated Amperage		22A	
Rated Power		5500W	
Max power		6000W	
DC output		12V	

Weight	75Kg
Supplied in	Ronix Brown Carton
Include	Wheel, Handel, Screw and Nuts, Wrench, Spark Plug, Screwdriver, Plug, Base, Funnel