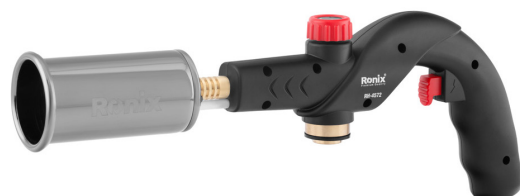


Gas Blow Torch

50mm

RH-4572

- GAS TYPE: butane Tanks with spiral Interface
- Push-button piezoelectric ignition, easy operation and high safety
- Long angled nozzle and burn-free finger guard keep your hand safely away from the flame
- An adjustable regulator can choose the intensity of different flames according to your needs
- Wind proof, moisture proof and water resistant, better than electric welding
- Fully automatic electronic ignition, safe and easy
- No need to light the flashlight with flame, just press the red button to light it
- Suitable for restaurant, household, picnic, hiking, camping and other outdoor activities
- It can be fixed on butane tank, which can be replaced



| | |
|-----------------------|--------------------------------------|
| Model | RH-4572 |
| Calibre of Spout | 1.0 mm |
| Material | IRON,Zinc Alloy, ABS,Cuprum |
| Max Flame Temperature | 1300°C |
| Type of Gas | Butane Gas |
| Appliance Category | Direct Pressure-Butane |
| Igniting Method | Automatic Piezoelectricity Ignite |
| Dimensions | 35.5×12.8×5.9cm |
| Weight | 0.438Kg |
| Packaging | Color Box |