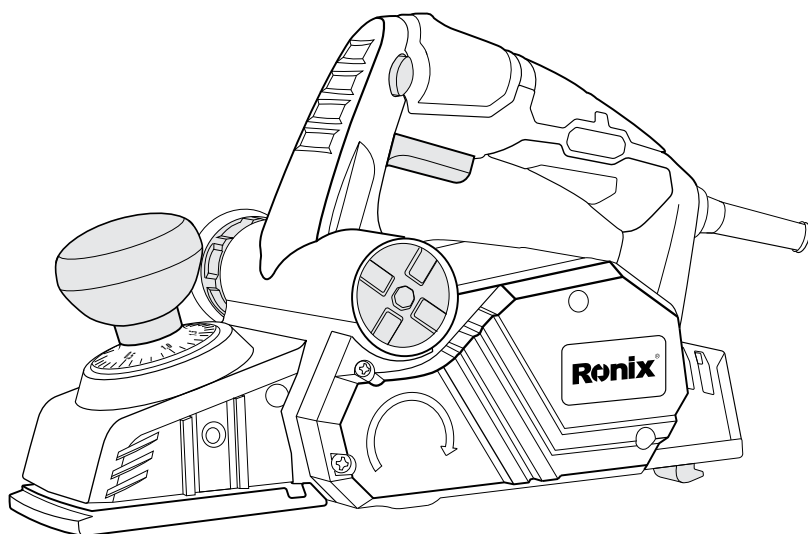


# Ronix<sup>®</sup>

Premium Quality

**POWER PLANER 82mm**

**9224**



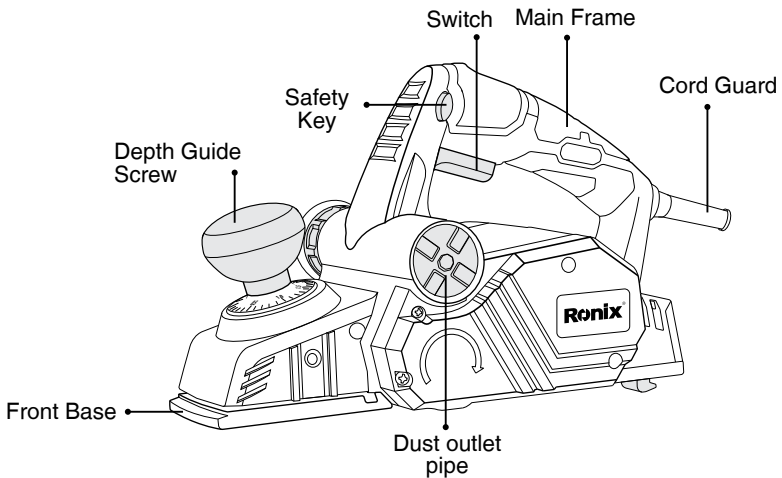
[www.ronixtools.com](http://www.ronixtools.com)



# SPECIFICATIONS

Model	<b>9224</b>
Power	900W
Frequency	50-60Hz
No-load Speed	14000RPM
planing width	82mm
Max planing depth	3mm
Max rabeting depth	24mm
Weight	3.2Kg
Accessories	Parallel Guide set: 1set Depth guide: 1pc Spanner: 1pc Hex wrench: 1pc Dust bag: 1pc Buffly bolt: 2pcs Flat washer: 2pcs Carbon Brush: 1set

# PARTS LIST



# IMPORTANT SAFETY INSTRUCTIONS

## **WARNING!**

When using electric tools, basic safety precautions should always be followed to reduce the risk of fire, electric shock, and personal injury, including the following:

**READ ALL INSTRUCTIONS.**

- **KEEP WORK AREA CLEAN.** Cluttered areas and benches invite injuries.
- **CONSIDER WORK AREA ENVIRONMENT.** Don't use power tools in damp or wet locations. Keep work area well lit. Don't expose power tools to rain. Don't use tool in presence of flammable liquids or gases.
- **KEEP CHILDREN AWAY.** All visitors should be kept away from work area. Don't let visitors contact tool or extension cord.
- **STORE IDLE TOOLS.** When not in use, tools should be stored in dry, and high or locked-up place – out of reach of children.
- **DON'T FORCE TOOL.** It will do the job better and safer at the rate for which it was intended.
- **USE RIGHT TOOL.** Don't force small tool or attachment to do the job of a heavy-duty tool. Don't use tool for purpose not intended.
- **DRESS PROPERLY TOOL.** Don't wear loose clothing or jewelry. They can be caught in moving parts. Rubber gloves and non-skid footwear are recommended when working outdoors. Wear protective hair covering to contain long hair.
- **USE SAFETY GLASSES.** Also use face or dust mask if cutting operation is dusty.
- **DON'T ABUSE CORD.** Never carry tool by cord or yank it to disconnect from receptacle. Keep cord from heat, oil, and sharp edges.
- **SECURE WORK.** Use clamps or vise to hold work. It's safer than using your hand and it frees both hands to operate tool.
- **DON'T OVERREACH.** Keep proper footing and balance at all times.
- **MAINTAIN TOOLS WITH CARE.** Keep tools sharp and clean for better and safer performance. Follow instructions for lubricating and changing accessories. Inspect tool cords periodically and if damaged, have repaired

by authorized service facility. Inspect extension cords periodically and replace if damaged. Keep handles dry, clean, and free from oil and grease.

- DISCONNECT TOOLS. When not in use, before servicing, and when changing accessories, such as blades, bits, cutters.
- REMOVE ADJUSTING KEYS AND WRENCHES. From habit of checking to see that keys and adjusting wrenches are removed from tool before turning it on.
- AVOID UNINTENTIONAL STARTING. Don't carry plugged-in tool with finger on switch. Be sure switch is OFF when plugging in.
- OUTDOOR USE EXTENSION CORDS. When tool is used outdoors, use only extension cords intended for use outdoors and so marked.
- STAY ALERT. Watch what you are doing, use common sense. Don't operate tool when you are tired.
- CHECK DAMAGED PARTS. Before further use of the tool, a guard or other part that is damaged should be carefully checked to determine that it will operate properly and perform its intended function. Check for alignment of moving parts, blinding of moving parts, breakage of parts, mounting, and any other conditions that may affect its operation. A guard or other part that is damaged should be properly repaired or replaced by an authorized service center unless otherwise indicated elsewhere in this instruction manual. Have defective switches replaced by authorized service center. Don't use tool if switch does not turn it on and off.
- GUARD AGAINST ELECTRIC SHOCK. Prevent body contact with grounded surfaces. For example; pipes, radiators, ranges, refrigerator enclosures.
- REPLACEMENT PARTS. When servicing, use only identical replacement parts.

## ■ VOLTAGE

### **WARNING!**

Before connecting the tool a power source (receptacle, outlet, etc.) be sure the voltage supplied is the same as that specified on the nameplate of

the tool. A power source with voltage greater than that specified for the tool can result in **SERIOUS INJURY** to the user – as well as damage to the tool. If in doubt, **DO NOT PLUG IN THE TOOL**. Using a power source with voltage less than the nameplate rating is harmful to the motor.

### **■ ADDITIONAL SAFETY RULES**

- 1) Rags, cloth, cord, string and the like should never be left around the work area.
- 2) Avoid cutting nails. Inspect for and remove all nails from the workpiece before operation.
- 3) Handle the blades very carefully.
- 4) Be sure the blade installation bolts are securely tightened before operation.
- 5) Hold the tool firmly with both hands.
- 6) Keep hands away from rotating parts.
- 7) Before using the tool on an actual workpiece, let it run for a while. Watch for vibration or wobbling that could indicate poor installation or a poorly balanced blade.
- 8) Make sure the blade is not contacting the workpiece before the switch is turned on.
- 9) Wait until the blade attains full speed before cutting.
- 10) Keep at least 200 mm (8") away from the tool at all times.
- 11) Always switch off and wait for the blades to come to a complete stop before any adjusting.
- 12) Never stick your finger into the chip chute. Chute may jam when cutting damp wood. Clean out chips with a stick.
- 13) Do not leave the tool running. Operate the tool only when hand-held.
- 14) When leaving the planer, switch off and set it with the front base up on a wooden block, so that the blades do not contact anything.
- 15) Always change both blades or cover on the drum, otherwise the resulting imbalance will cause vibration and shorten tool life.

# SAVE THESE INSTRUCTIONS.

## OPERATION

### ■ REMOVING OR INSTALLING PLANER BLADES

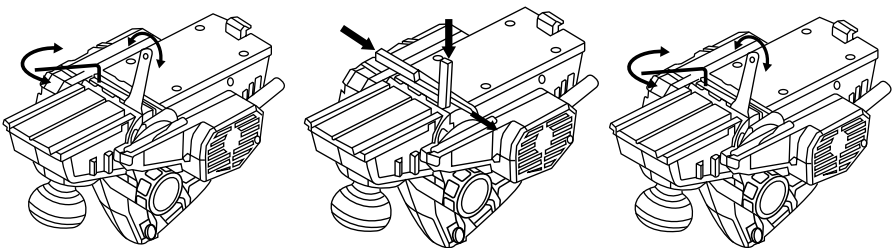
#### **⚠ CAUTION:**

Always be sure that tool is switched off and unplugged before removing or installing the blade.

To replace the blade, first loosen the three screws on the drum base with a wrench and then loosen the two screws on the blade holder base using another Allen wrench. Now, using a piece of wood, slide the blade out of the support base.

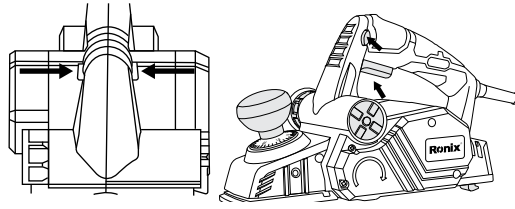
To install the blades, first clean out all chips or foreign matter adhering to the drum or blades. Use blades of the same dimensions and weight, or drum oscillation/vibration will result, causing poor planing action and, eventually, tool breakdown.

Then replace the new blades inside the holder base. In this step, adjust the depth of the blades by opening and closing the nut screws (using an Allen wrench). Finally, by tightening 3 screws on the drum, the blade replacement operation is completed.



### ■ SWITCH ACTION

First press the safety lock button, then the device will be turned on by pressing the on / off switch.

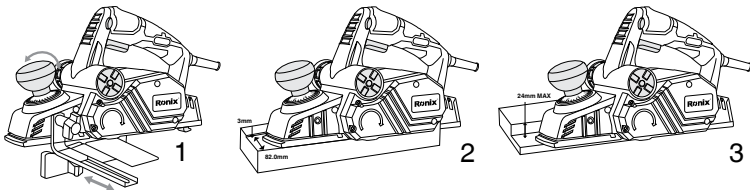


## **⚠ CAUTION:**

before plugging in the tool, always check to see that the trigger switch actuates properly and returns to the “OFF” position when release.

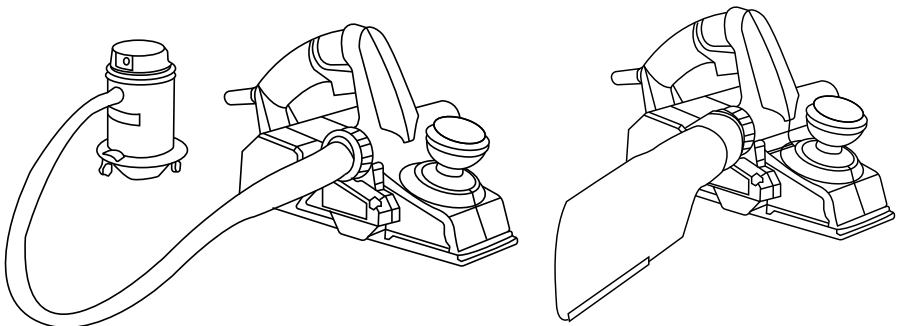
## **OPERATION**

- Adjust the desired grate depth with the depth adjustment screw on the front of the machine. Then place the movable insole on the workpiece



## **DUST BAG**

Prevent the spread of wood chips to the workplace by installing a dust bag or connecting a vacuum cleaner pipe to the machine.





## **MAINTENANCE**

### **CAUTION:**

Always be sure that the tool is switched off and unplugged before attempting to perform inspection or maintenance.

## **OPERATION**

- Adjust the desired grate depth with the depth adjustment screw on the front of the machine. Then place the movable insole on the workpiece.



[www.ronixtools.com](http://www.ronixtools.com)