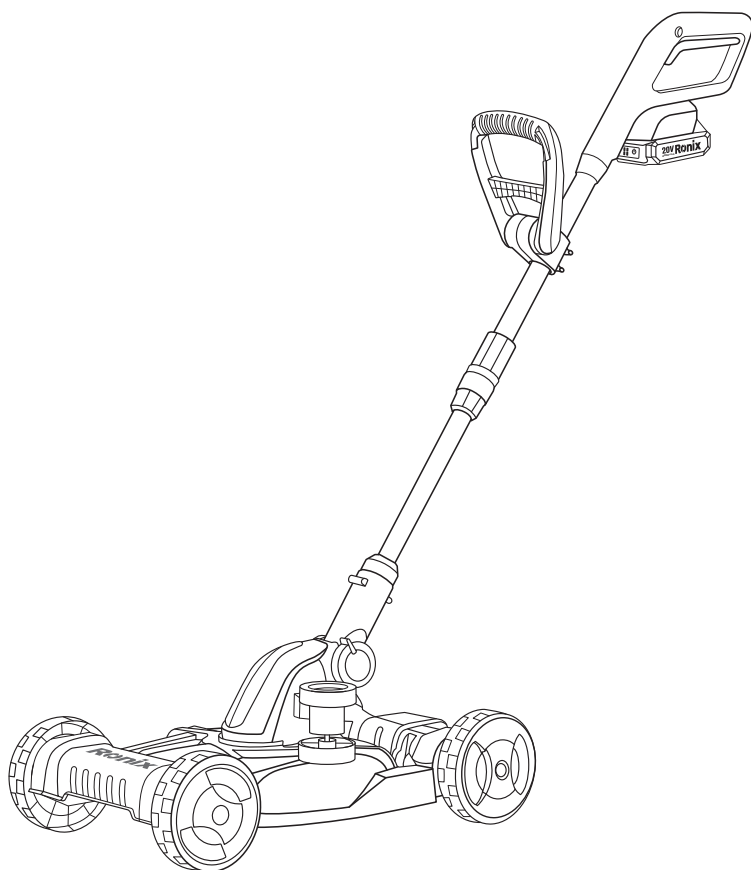


# **Ronix<sup>®</sup>**

Premium Quality

## **MULTI GRASS TRIMMER 20V**

### **8662**



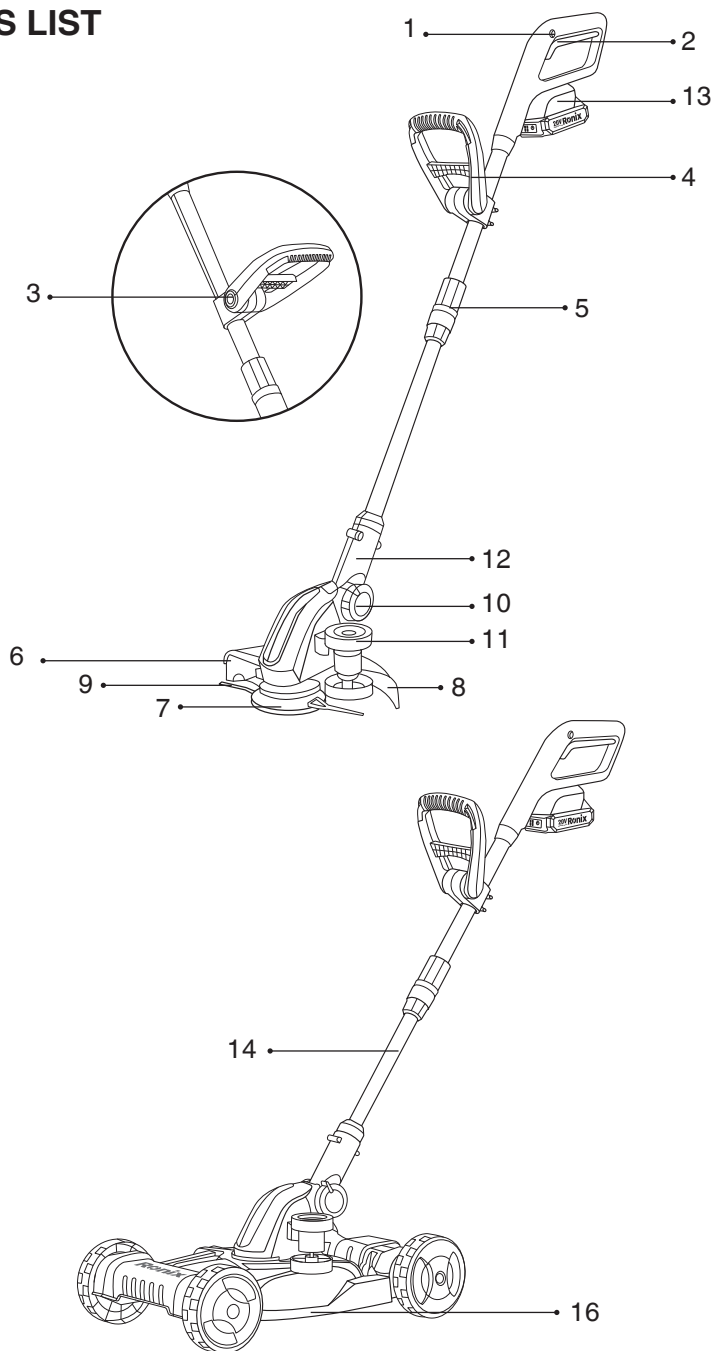
[www.ronixtools.com](http://www.ronixtools.com)

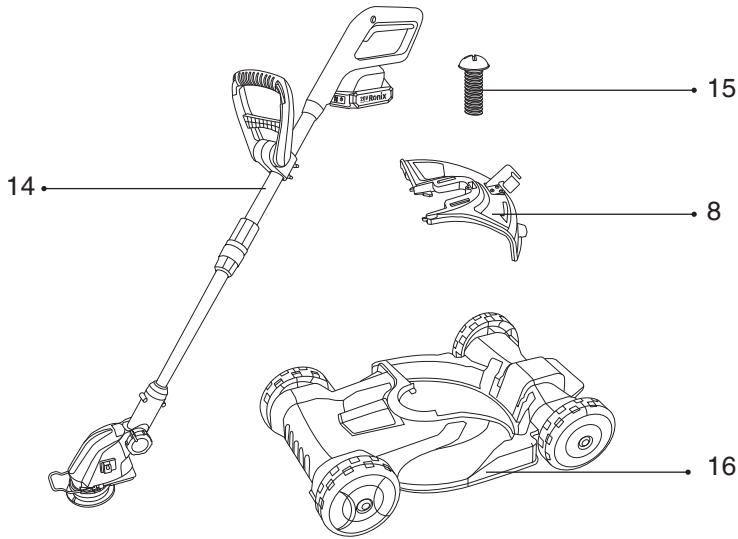


## TECHNICAL SPECIFICATIONS

Model	<b>8662</b>
Battery Chemistry	lithium
Battery Voltage	20V
Battery Capacity	4.0Ah
No-load Speed	6500RPM
Cutting Width	300mm
Telescopic tube	220mm
Running Time	30min
Net Weight	4.6Kg(without battery and charger)
Gross Weight	6.6Kg(with 2pcs 4.0Ah Battery and 1pc 4.0A charger)
Accessories	Battery 4.0Ah: 2pcs Charger 4.0A: 1pc Plastic Blade: 10pcs Nylon Cutter: 1pc Protection Cover: 1pc Side Wheel: 1pc Protect Cover Screw: 1pc Dual Purpose Screwdriver: 1pc Fixed Wire Spring In Front Of The Grass Guard: 1pc Allen Key 3mm: 1pc Allen Key 4mm: 1pc

## PARTS LIST





- 1- Safety lock-off
- 2- On/Off switch
- 3- Handle adjustment button
- 4- Additional handles
- 5- Height adjustment (union nut)
- 6- Edge guide
- 7- Cutting assembly
- 8- Guard hood
- 9- Line cutter
- 10- Locking button for long handle tilt
- 11- Side wheel
- 12- Adjustment position of motor rotation
- 13- Battery mount
- 14- Cordless grass trimmers
- 15- Mounting screws
- 16- Trimmer cart

## **DANGER!**

When using equipment, a few safety precautions must be observed to avoid injuries and damage. Please read the complete original operating instructions and safety information with due care. Keep these operating instructions in a safe place so that the information is available at all times. If you give the equipment to any other person, hand over these original operating instructions and the safety information as well. We cannot accept any liability for damage or accidents which arise due to failure to follow these instructions and the safety information.

## **SAFETY INFORMATION**


### **WARNING!**

Read all the safety information, instructions, illustrations and technical data provided on or with this power tool. Failure to adhere to the following instructions may result in electric shock, fire and/or serious injury. Keep all the safety information and instructions in a safe place for future use. This tool is not intended to be used by children, persons with reduced physical, sensory or mental capacities or with a lack of experience and knowledge, or persons who are not familiar with the instructions. Children must always be supervised in order to ensure that they do not play with the tool. Children are not allowed to carry out cleaning or maintenance. Local regulations might specify an age limit for the user.

## **EXPLANATION OF THE SYMBOLS USED**

 Warning!

 Wear eye protection!

 Wear ear protection!



Read the operating instructions!



Keep other persons away!



Protect from the damp.



Guaranteed sound power level

## ■ INTENDED USE

The equipment is designed for cutting lawns and small areas of grass in private and hobby gardens.

Equipment designed for use in private and hobby gardens is regarded as unsuitable for use in public facilities, parks and sports centers, along roadways, or in agriculture and forestry. The operating instructions supplied by the manufacturer must be obeyed to ensure that the equipment is used properly. Important! This equipment must not be used for composting purposes (shredding) as this could result in injury or damage to property. The equipment may be used only for the tasks it is designed to handle. Any other use is deemed to be a case of misuse. The user/operator and not the manufacturer will be liable for any damage or injuries of any kind resulting from such misuse.

Please note that our equipment has not been designed for use in commercial, trade or industrial applications. Our warranty will be voided if the equipment is used in commercial, trade or industrial businesses or for equivalent purposes.



## CAUTION!

The equipment is allowed to be used only with the Specific lithium-ion batteries! The lithium-ion batteries are allowed to be charged only with the Specific charger. The value quoted for vibration was determined in accordance with a set of standardized criteria and can be used to compare different products with one another. This value is also

suitable to be used for estimating in advance the strain on the user caused by the vibration.

### **CAUTION!**

Depending on how you use the device, the actual vibration emissions can vary from the values listed above. Take appropriate measures to protect yourself against vibration stress. Take the entire work sequence into consideration including times at which the device is not working under load or is switched off. Appropriate measures include among other things regular care and maintenance of the device and tool attachments, keeping your hands warm, taking regular breaks and good work sequence planning.

#### **■ REDUCE NOISE GENERATION AND VIBRATION TO A MINIMUM!**

- Use only equipment that is in perfect condition.
- Maintain and clean the equipment regularly.
- Adapt your way of working to the equipment.
- Do not overload the equipment.
- Have the equipment checked if necessary.
- Switch off the equipment when not in use.
- Wear gloves.
- Wear ear protection.

### **CAUTION!**

#### **■ RESIDUAL RISKS**

Even if you use this electric tool in accordance with the instructions, certain residual risks cannot be eliminated. The following hazards may arise in connection with the equipment 's construction and layout:

- 1- Damage to hearing if no suitable ear protection is worn.
- 2- Health damage caused by hand-arm vibrations if the equipment is used over a longer



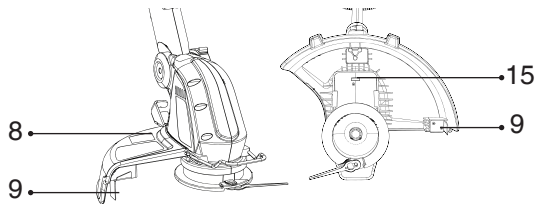
period or is not properly guided and maintained.

3- Injury and damage to property caused by flying parts.

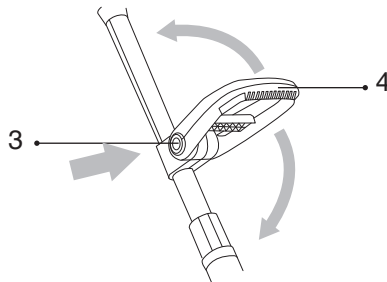
4- Cut injuries if no suitable safety clothing is used.

## ■ BEFORE USING THE EQUIPMENT

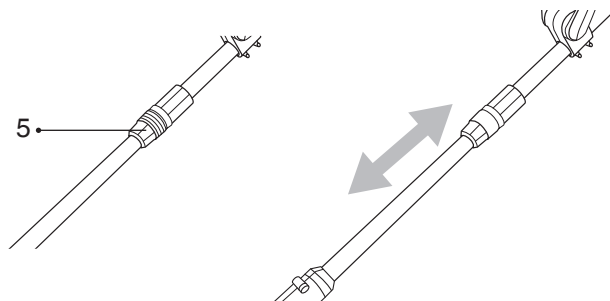
5.1- Fitting the guard hood: Push the guard hood (Item 8) onto the motor housing. Secure the guard hood with mounting screws (Item 15). A blade (Item 9) on the underside of the guard hood automatically cuts the cutting line to length. It is provided with a safety cover. Remove the safety cover before starting work.



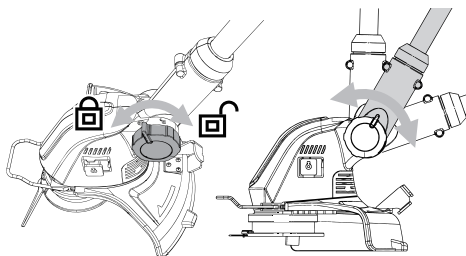
5.2- Adjusting the additional handle: Press the Handle adjustment button (Item 3) and turn the additional handle (Item 4) to the required position. Release the Handle adjustment button (Item 3) again. The additional handle is secured.



5.3 Height adjustment: Undo the union nut (Item 5) until the grass trimmer handle can be moved in and out freely. Now set the required working height and secure the handle in this position by tightening the union nut again.



5.4- Adjusting the angle of tilt of the long handle: Turn the Locking button for long handle tilt to the unlocked position for adjusting the angle of tilt (Item 10). Now you can set the long handle to the required angle of tilt. To fix the angle of tilt, Turn the Locking button for long handle tilt to the locked position. Six different locking angles are possible.



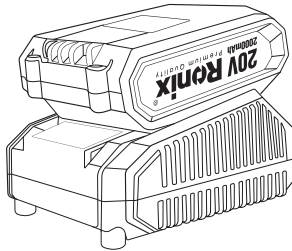
### **⚠ WARNING! RISK OF INJURY!**

If the angle of tilt of the long handle is wrongly set, you could injure yourself or the grass trimmer could become damaged.

- Use the grass trimmer only when the long handle and the button is latched in one of the three positions for the angle of tilt and when the long handle is securely seated.
- Do not use the grass trimmer if the long handle is not latched in place.

## ■ CHARGING THE BATTERY

- 1- Take the battery pack out of the equipment. To do so, press the push lock button (Item C).
- 2- Check that your mains voltage is the same as that marked on the rating plate of the battery charger. Insert the power plug of the charger into the socket outlet. The green LED will then begin to flash.
- 3- Insert the battery into the charger.
- 4- In the section entitled „Charger indicator “you will find a table with an explanation of the LED indicator on the charger.



The battery can become a little warm during the charging. This is normal.

If the battery pack fails to charge, check:

- whether there is voltage at the socket outlet
- whether there is good contact at the charging contacts

If the battery pack still fails to charge, send

- the charger
- and the battery pack

to our customer service center.

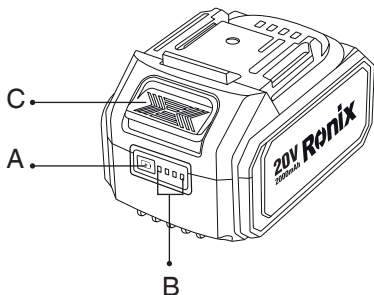
To ensure that the battery pack provides long service, you should take care to recharge it promptly.

You must recharge the battery pack when you notice that the performance of the device drops. Never allow the battery pack to become fully discharged. This will cause it to develop a defect.

### 5.6 Battery charge level indicator (Fig. 12)

Press the button for the battery charge level indicator (Item A). The

battery charge level indicator (Item B) shows the charge status of the battery using 4 LEDs.



All 4 LEDs are lit:

The battery is fully charged.

3 or 2 or 1 LED(s) are lit:

The battery has an adequate remaining charge.

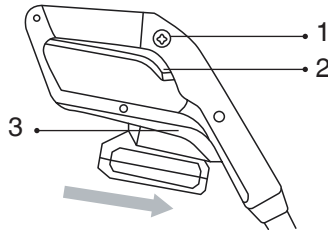
1 LED flashes:

The battery is empty, recharge the battery.

All LEDs blink:

The battery temperature is too low. Remove the battery from the equipment, keep it at room temperature for one day. If the fault reoccurs, this means that the rechargeable battery has undergone exhaustive discharge and is defective. Remove the battery from the equipment. Never use or charge a defective battery.

**5.7 Fitting the battery:** Press the push lock button of the battery and push the battery into the mount provided. When the battery is positioned as in Fig, make sure that the push lock button latches in place! To remove the battery, proceed in reverse order!

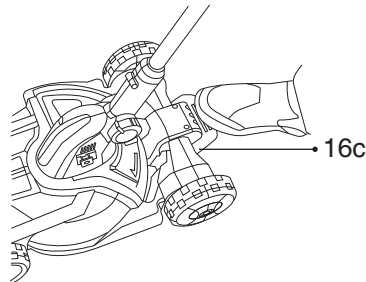
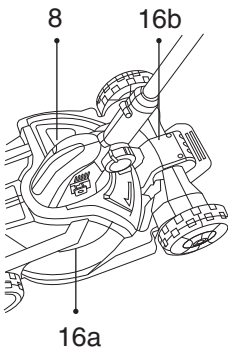


## **⚠ DANGER!**

Start up the equipment only when it is fully assembled.

5.8 Fitting the grass trimmer to the trimmer cart: Insert the motor head into the guide (Item 16a) on the trimmer cart. Press the grass trimmer at an angle to the rear. The guard hood (Item 8) will latch in the trimmer cart lock (Item 16b).

- To remove the grass trimmer from the trimmer cart, press the trimmer cart lock (Item 16c). Lift the grass trimmer at an angle and remove it.



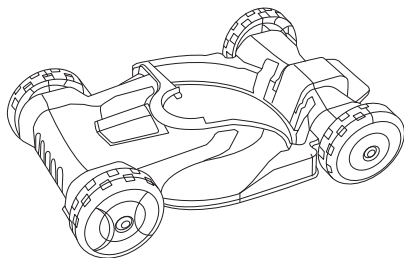
## **ADJUSTING THE CUTTING HEIGHT**

## **⚠ CAUTION!**

### **■ REMOVE THE BATTERY!**

It is recommended to adjust the cutting height when the grass trimmer is not fitted. Turn over the trimmer cart so that both axles are

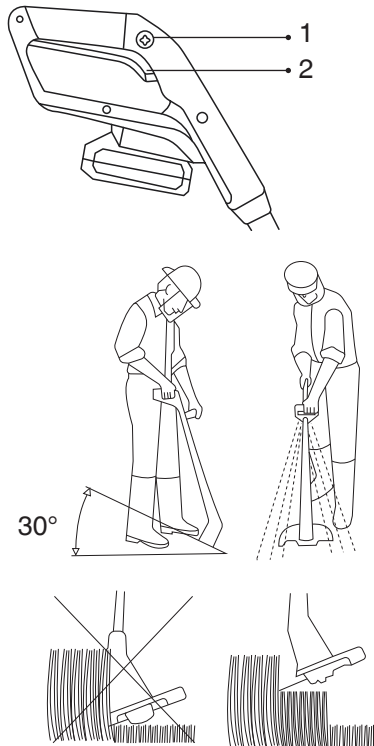
accessible. Pull back the axles and place them in the same notch on both sides (notch D = 35mm cutting height, notch E = 55 mm cutting height). For a uniform cutting height, you must place both axles in the same notch. Fit the grass trimmer to the trimmer cart (see section 5.8).



## ■ OPERATION

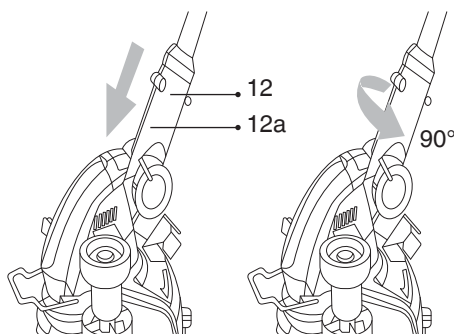
To obtain maximum performance from your grass trimmer, please follow these instructions:

- Never use the grass trimmer without the guard.
- Do not mow grass when it is wet. The best results are achieved on dry grass.
- To switch on your grass trimmer, press the safety lock-off (Fig.13 / Item 1) and the on/Off switch (Fig. 13 / Item 2).
- To switch off your grass trimmer, let go of the on/Off switch (Fig. 13 / Item 2) again.
- Do not allow the grass trimmer near the grass until the switch is pressed, i.e., the grass trimmer is in operation.
- To cut properly, swing the grass trimmer sideways while moving forwards. Keep the grass trimmer inclined at an angle of approx. 30° while you do so (see Figs. 18 and 19).
- If the grass is long, the grass must be cut shorter in stages, starting from the tip (see Fig.20).
- Use the edge guide and the guard hood to prevent unnecessary wear on the line.



## ■ USING THE GRASS TRIMMER AS AN EDGE TRIMMER

To cut the edges of lawns alongside e.g., flower beds (vertical cutting), the grass trimmer can be converted into a lawn edge trimmer. The lock (Item 12) latches in the angle of tilt adjustment (Item 12a). While holding the angle of tilt adjustment (Item 12a) in place, pull the long handle upwards out of the lock and turn it 90° counter-clockwise until it latches home. Tilt the long handle as required (see section 5.4). Return the motor head in reverse order to its original position in order to use it as a grass trimmer or with the trimmer cart.



## ■ USING WITH A TRIMMER CART

- Push the equipment.
- Ensure that the safe distance established by the long handle between the trimmer cart and the user is always maintained.
- For safety reasons the lawn mower is not allowed to be used on inclines of more than 15 degrees.
- Take special care when backing up and pulling the lawn mower. Tripping hazard!
- Tips for proper mowing
  - It is recommended that you overlap the mowing swaths.
  - Always mow across inclines (not up and down).
  - Steer the cutting in straight lines in order to achieve a tidy look. The swaths should overlap each other by a few centimeters in order to avoid stripes.
  - Select the cutting height according to the actual length of the grass. Make several passes so that no more than 3 cm of grass are cut at one time.

## ■ CLEANING, MAINTENANCE

Before putting away or cleaning the grass trimmer, switch it off and remove the battery.

## ■ CLEANING

- Keep all safety devices, air vents and the motor housing free of dirt



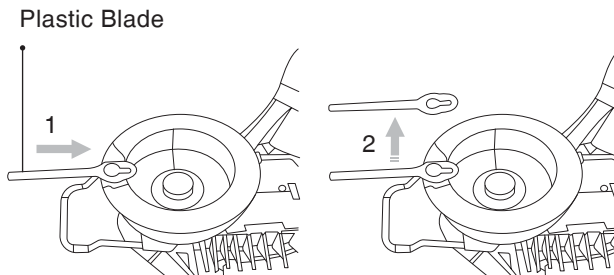
and dust as far as possible. Wipe the equipment with a clean cloth or blow it down with compressed air at low pressure.

- We recommend that you clean the equipment immediately after you use it.
- Clean the equipment regularly with a damp cloth and some soft soap. Do not use cleaning agents or solvents; these may be aggressive to the plastic parts in the equipment. Ensure that no water can get into the interior of the equipment. The ingress of water into an electric tool increases the risk of an electric shock.
- Use a brush to remove deposits from the safety cover.

## ■ REPLACING THE PLASTIC BLADE

**Danger! Remove the battery!**

- 1- Remove the Wear plastic blade. As shown in the figure.
- 2- To Install the plastic blade, proceed in reverse order!



## ■ MAINTENANCE

There are no other parts inside the equipment which require maintenance.

## ■ TRANSPORT

- Always hold the equipment with one hand on the handle and the other hand on the additional handle. Do not carry the equipment by its motor housing.
- Secure the equipment against slipping if you transport it in a vehicle.

- As far as possible, use the original packaging for transporting the equipment.

## ■ FAULTS

The equipment does not work: Check that the battery is charged and whether the charger is working. If the equipment will not work in spite of the voltage supply being OK, please send it to the customer service. Only trimmer cart: Check whether the cutting unit in the trimmer cart can rotate freely. Keep the underside of the housing clean and remove any grass build-up. Select the correct cutting height. Deposits or too low a cutting height can make starting difficult or impossible.

## CHARGER INDICATOR

INDICATOR STATUS		EXPLANATIONS AND ACTIONS
RED LED	GREEN LED	
OFF	FLASHING	Ready For Use The charger is connected to the mains and is ready for use; there is no battery pack in the charger
ON	OFF	Charging The charger is charging the battery pack in quick charge mode. Important! The actual charging times may vary slightly from the stated charging times depending on the existing battery charge.

OFF	ON	<p>The battery is charged and ready for use.</p> <p>The unit then changes over to gentle charging mode until the battery is fully charged. To do this, leave the rechargeable battery on the charger for approx. 15 minutes longer. Action:</p> <p>Take the battery pack out of the charger. Disconnect the charger from the mains supply.</p>
FLASHING	OFF	<p>Adapted charging</p> <p>The charger is in gentle charging mode. For safety reasons the charging is performed less quickly and takes more time. The reasons can be:</p> <ul style="list-style-type: none"> <li>- The rechargeable battery has not been used for a very long time.</li> <li>-The battery temperature is outside the ideal range.</li> </ul> <p>Action:</p> <p>Wait for the charging to be completed; you can still continue to charge the battery pack.</p>
FLASHING	FLASHING	<p>Fault</p> <p>Charging is no longer possible. The battery pack is defective.</p> <p>Action:</p> <p>Never charge a defective battery pack. Take the battery pack out of the charger.</p>
ON	ON	<p>Temperature fault</p> <p>The battery pack is too hot (e.g. due to direct sunshine) or too cold (below 0° C).</p> <p>Action:</p> <p>Remove the battery pack and keep it at room temperature (approx. 20° C) for one day.</p>



[www.ronixtools.com](http://www.ronixtools.com)