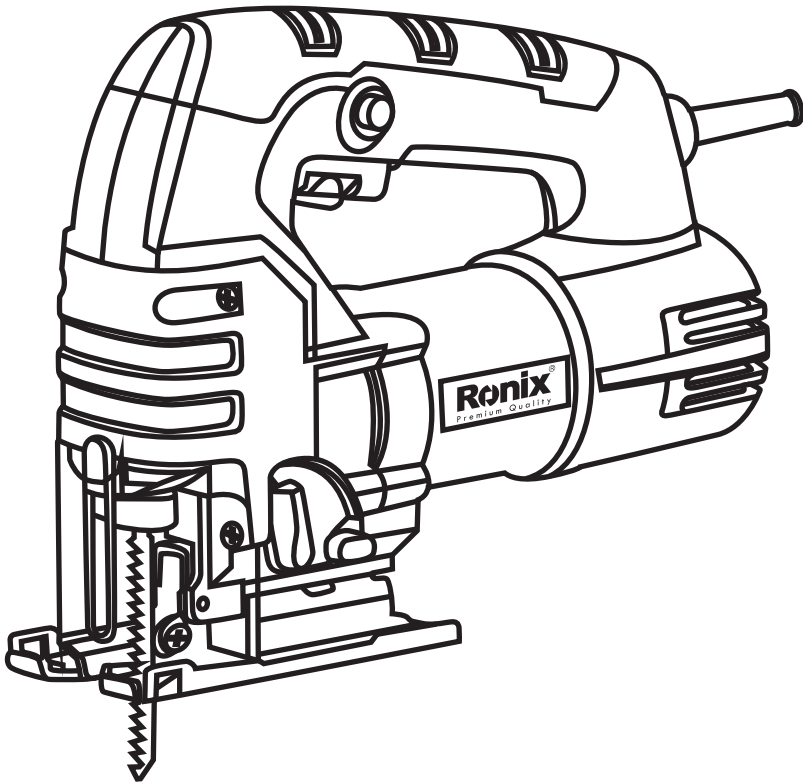


**Ronix**<sup>®</sup>  
Premium Quality

[www.ronixtools.com](http://www.ronixtools.com)



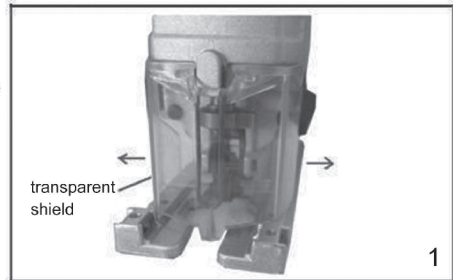
**INSTRUCTION MANUAL**

**RONIX JIG SAW Model No:4120**

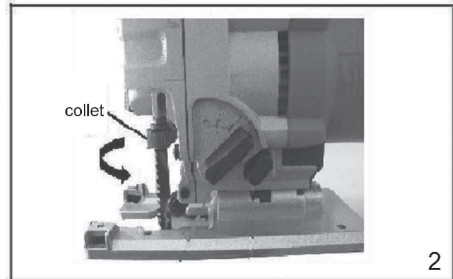


***Install or remove the saw blade***

1) Pull from the side to take down the transparent shield.



2) Pull the collet and insert the blade into the blade slot, then loosen the collet and make sure the blade has been embedded firmly. The blade will pop out if the collet is pulled again.



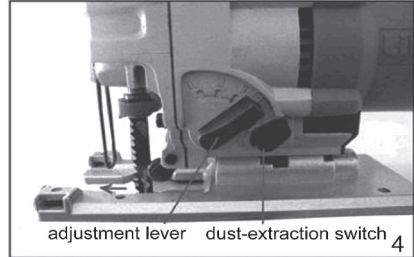
3) Fit on the transparent shield.

**Maintenance:****Replace the carbon brush:**

Replace and check the carbon brush regularly, when the area of abrasion reached the outer limit abrasive mark, replacement is necessary, the two brushes are to be replaced at the same time.

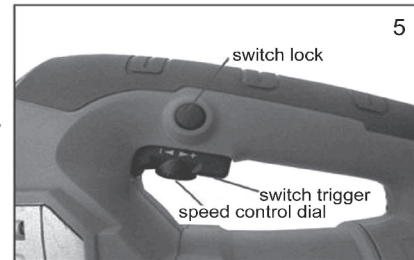
**Setting the pendulum action**

The four pendulum action settings allow optimum adaptation of cutting speed, cutting capacity and cutting pattern to the material being sawed. The pendulum action can be adjusting in four steps with the adjustment lever. Switching is possible with the machine running.

**Switching on and off**

Note: please make sure that the switch is off when the tool plug into electricity socket.

1. To run the tool, press the on/off switch.
2. For continuous operation, press and hold down the switch, press the lock-on button and release the switch.
3. To preset the sawing speed, turn the control dial to the desired level. the higher the rate, the higher the sawing speed.
4. To stop the tool, release the switch. always switch off the tool when work is finished and before unplugging.

**General safety rules**

**Warning:** when using electric tools, basic safety precautions should always be followed to reduce the risk of fire, electric shock, and personal injury, including the following.

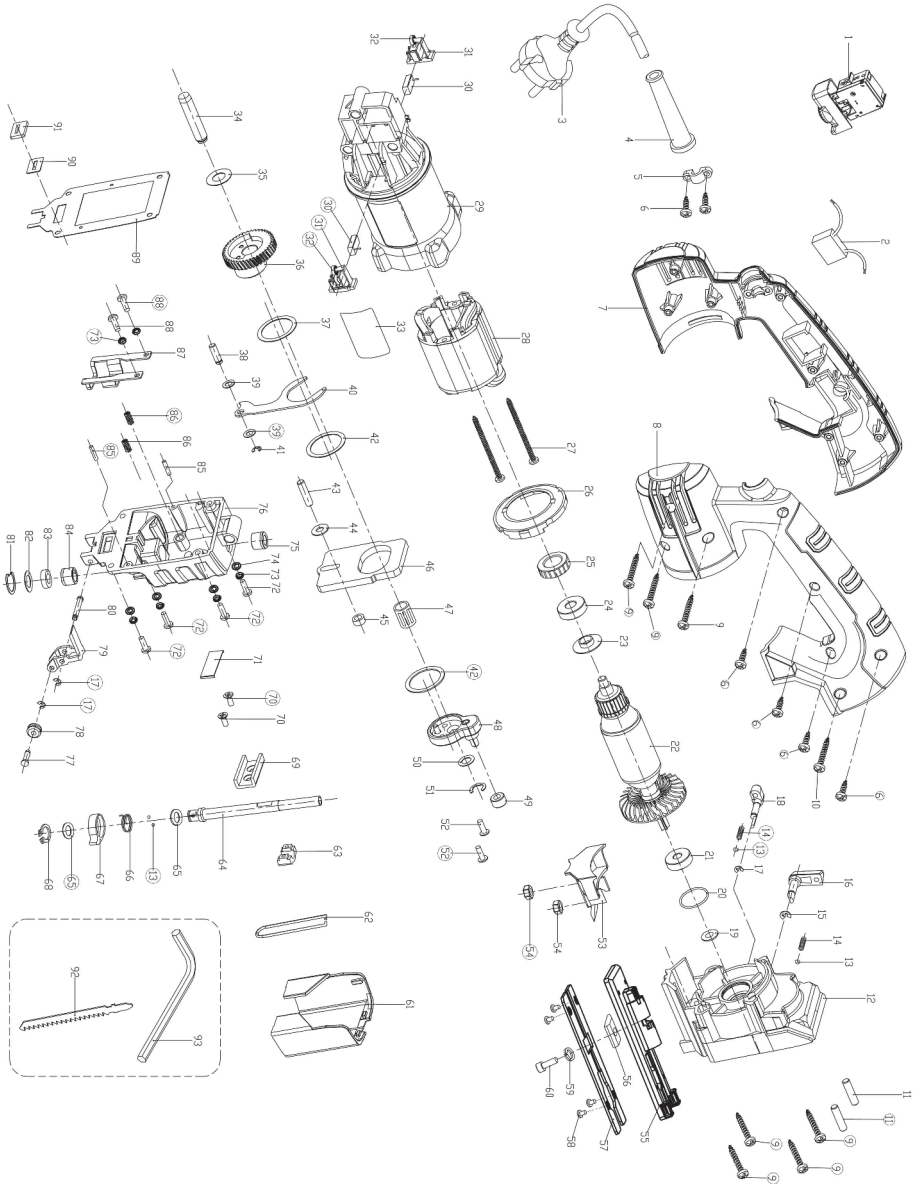
- 1. Keep work area clean.** Cluttered areas and benches invite accidents.
- 2. Consider work area environment.** Do not expose power tools to rain. Do not use power tools presence of flammable liquid or bases.
- 3. Keep children away.** Do not let visitors contact tool, or extension cord. All visitors should be kept away from work area.
- 4. Store idle tools.** When not in use, tools should be stored in dry and high or locked- up place out of reach of children.
- 5. Do not force tool.** It will do the job better and safer at the rate for which it was intended.
- 6. Use right tool.** Do not force small tool or attachment to do the job of a heavy -duty tool , Do not use tool for purpose not intended.
- 7. Wear proper Apparel.** No loose clothing or jewelry to get caught in moving parts. Wear protective hair covering to contain long hair.

**Ronix**<sup>®</sup>

[www.ronixtools.com](http://www.ronixtools.com)

- 8. Use safety glasses.** Use face or dust mask when cutting operation is dusty.
- 9. Do not abuse cord.** Never carry tool by cord or yank it to disconnect from receptacle. Keep cord from heat oil and sharp edges.
- 10. Use the power tools** only for applications specified in the Handling Instructions.
- 11. Do not over reach.** Keep proper footing and balance at all times.
- 12. Maintenance tools with care.** Keep tools sharp and clean for better and safer performance. Follow instructions for lubricating and changing accessories. Inspect tool cords periodically and if damaged, have repaired by authorized service center. Inspect extension cords periodically and replace if damaged. Keep handles dry, clean, and free from oil and grease.
- 13. Unplug power cord.** When not in use, before servicing when changing attachments, blades, bits, cutters, etc., unplug power cord.
- 14. Remove adjusting keys and wrenches.** Form habit of checking to see that keys and adjusting wrenches are removed from tool before turning it on.
- 15. Avoid unintentional starting.** Do not carry plugged in tool with finger on switch. Make sure switch is off when plugging in.
- 16. Use extension cord.** When tool is used outdoors, use only extension cords intended for outdoor use.
- 17. Stay alert.** Watch what you are doing. Use common sense. Do not operate tool when you are tired.
- 18. Check damaged parts.** Before further use of the tool, a guard or other part that is damaged should be carefully checked to determine that it will operate properly and perform its intended function. Check for alignment of moving parts, binding of moving parts, breakage of parts, mounting, and any other conditions that may affect its operations. A guard or other part that is damaged should be properly repaired or replaced by an authorized service center unless indicated elsewhere in the instruction manual. Have defective switch replaced by authorized service center. Do not use tool if switch does not turn it on and off.
- 19. Avoid electric shock.** When you are operating tool, do not touch metal being grounded, such as pipe, radiator, freezer etc.
- 20. Replace parts.** Choose the parts specified by the manufacturer and have them replaced by the special repairing center.

**Mind the voltage of the power supply:** Make sure the voltage of the power supply is the same as that indicated on the board of the tool. When the former is higher than the latter, grave accidents would happen to the user, as well as ruin to the tool itself. Therefore never plug in before confirm the voltage of the power supply. On the other side, if the former is lower than the latter, it will be harmful to the engine.



1	Switch	1	48	Partial sway ring	1
2	Capacitance	1	49	Steel bushing 12X6X7	1
3	Power cord	1	50	Washer 15X10.2X1	1
4	Cord guard	1	51	Impede ring for spindle 7#	1
5	Cord clamp	1	52	Screw M15X16	2
6	Tapping screw ST4.2X16	6	53	Wind fender	1
7	Left hand	1	54	Nut M6	2
8	Right hand	1	55	Aluminum base plate	1
9	Tapping screw ST4.2X30	7	56	Base plate briquetting	1
10	Tapping screw ST4.2X25	1	57	Iron base plate	1
11	Round pin6X25	2	58	Cross countersunk screw M5X8	4
12	Middle cover plate	1	59	Spring washer 6#	1
13	Steel ball 3.5	4	60	Screws M6X25	1
14	Lifts knob spring 2.5X3.3X11	2	61	Transparent guard	1
15	Impede ring for spindle 5#	1	62	Steel wire protector	1
16	Lifts knob	1	63	Fixed block	1
17	Impede ring for spindle 3#	3	64	Reciprocating lever	1
18	Plastic knob	1	65	Washer 16X10.1X0.5	2
19	Wollen washer 8.5X18X1	1	66	Torsional spring	1
20	O stype washer 24X27X1.5	1	67	Quick assembling chuck	1
21	Bearing 609	1	68	Retaining ring 10#	1
22	Armature	1	69	Slide	1
23	Circle of armature	1	70	Screw M4X10 (10.9级/12.9级)	2
24	Bearing 607	1	71	Slide compressing	1
25	Bearing sleeve	1	72	Screw M4X20	4
26	Wend fender	1	73	Spring washer 4#	6
27	Tapping screw ST4.2X60	2	74	Plain washer 4#	4
28	Stator	1	75	Copper bushing 8X14 (13.8) X10	1
29	Plastic body	1	76	Front guard	1
30	Carbon brush	2	77	Guide wheel shaft	1
31	Brush holder	2	78	Idler pulley	1
32	Disc spring	2	79	Wheel frame	1
33	Label	1	80	Wheel frame lock shaft	1
34	Camshaft gear drive	1	81	Circlips for holes	1
35	Washer 21.5X10.5X0.5	1	82	Plate	1
36	Camshaft gear	1	83	Reciprocating lever cover	1
37	Washer 34X27.2X1	1	84	Ellipse copper bushing	1
38	Pin spindle5.5X22.5	1	85	Pin	2
39	Washer 11X6X0.5	2	86	Slide support spring	2
40	Forked rob	1	87	Slide support	1
41	Impede ring for spindle 4#	1	88	Screw M4X10(8.8级)	2
42	Washer 34X27.2X0.5	2	89	Paper gasket	1
43	Pin 6X20	1	90	Square gasket	1
44	Washer 15X6.5X1	1	91	Square dust-proof mat	1
45	Slide bushing 12X6X4	1	92	Saw blade	1
46	Balance weight	1	93	5X5 Hexagonal spanner	1
47	Needle bearing KBK101315.5	1			