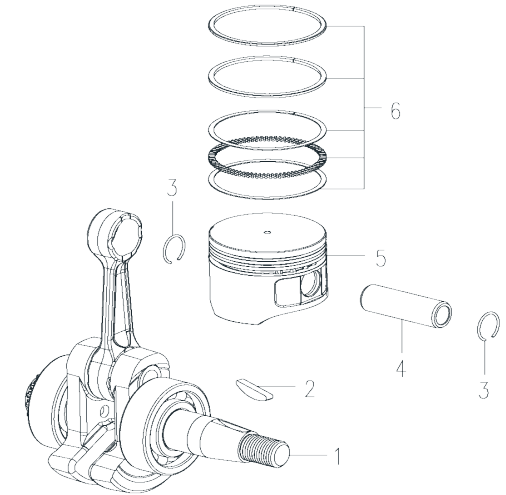
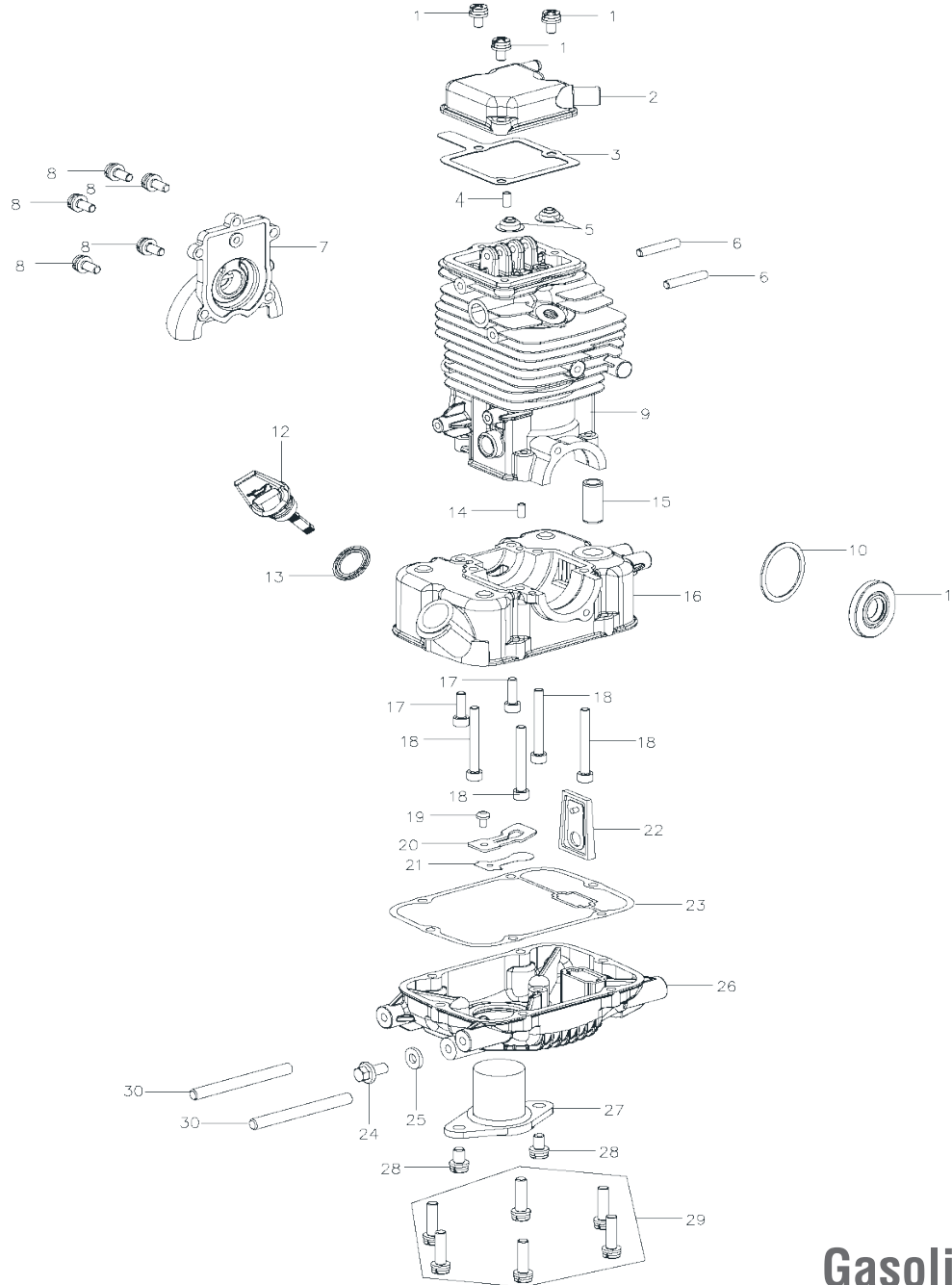
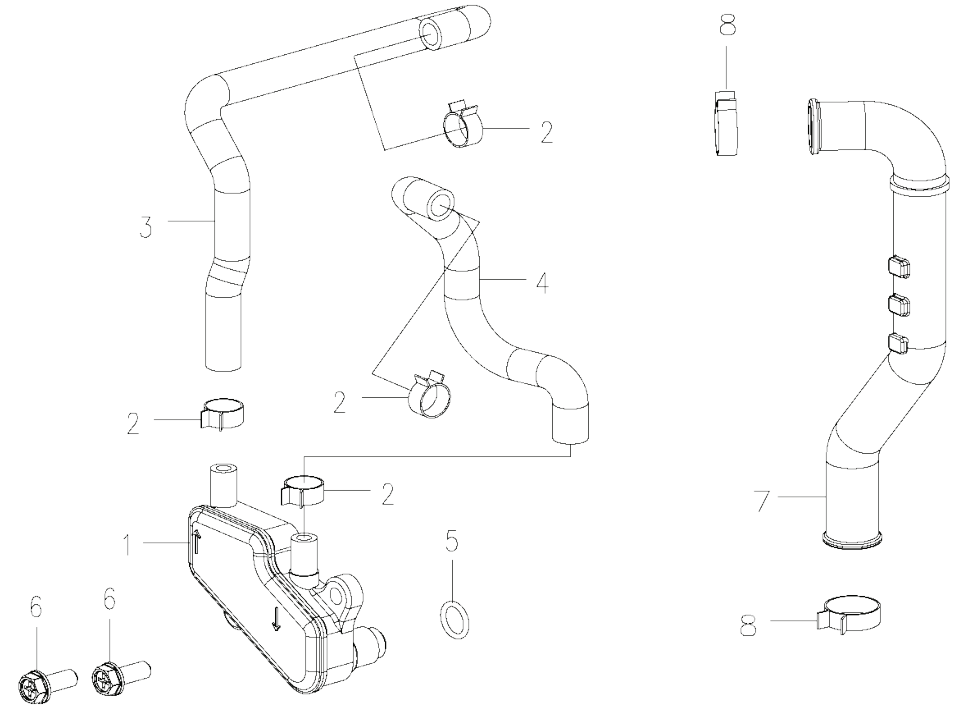
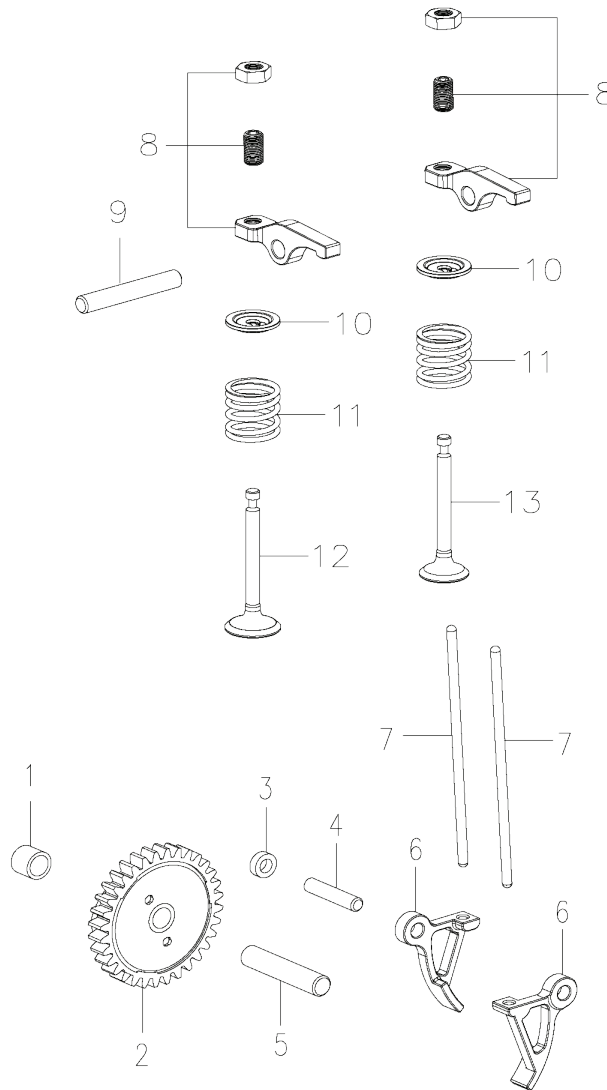


Number	Name
1	Screw M5x20
2	Cylinder Head Cover
3	Cylinder Head Cover Seal
4	Valve Oil Seal
5	Dual-Head Bolts M5x70
6	Dual-Head Bolts M5x28
7	Cam Chamber Cover
8	Screw M5x14
9	Upper Crankcase
10	Washer 30x37x1
11	Oil Seal 15x35x5
12	Oil Gauge
13	Oil Gauge Gasket
14	Dowel Pin 4x8
15	Ventilation Nozzle
16	Lower Crankcase
17	Screw M5x16
18	Screw M5x40
19	Screw M3x6
20	valve retainer
21	valve
22	One-Way Valve
23	gasket for oil pan
24	Hexagon Flange Bolt M6x12
25	Aluminium Gasket 6x13x2
26	Oil Pan
27	Oil Level Sensor
28	Screw M6x18
29	Screw M5x25
30	Dual-Head Bolts M6x36

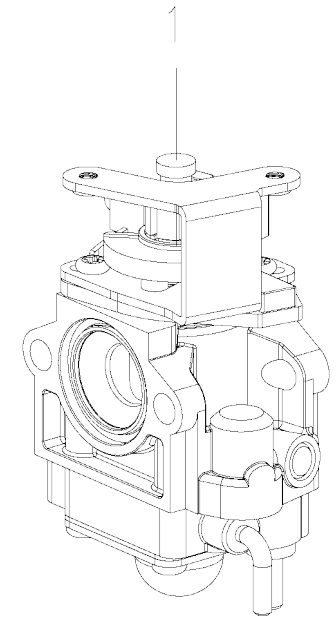
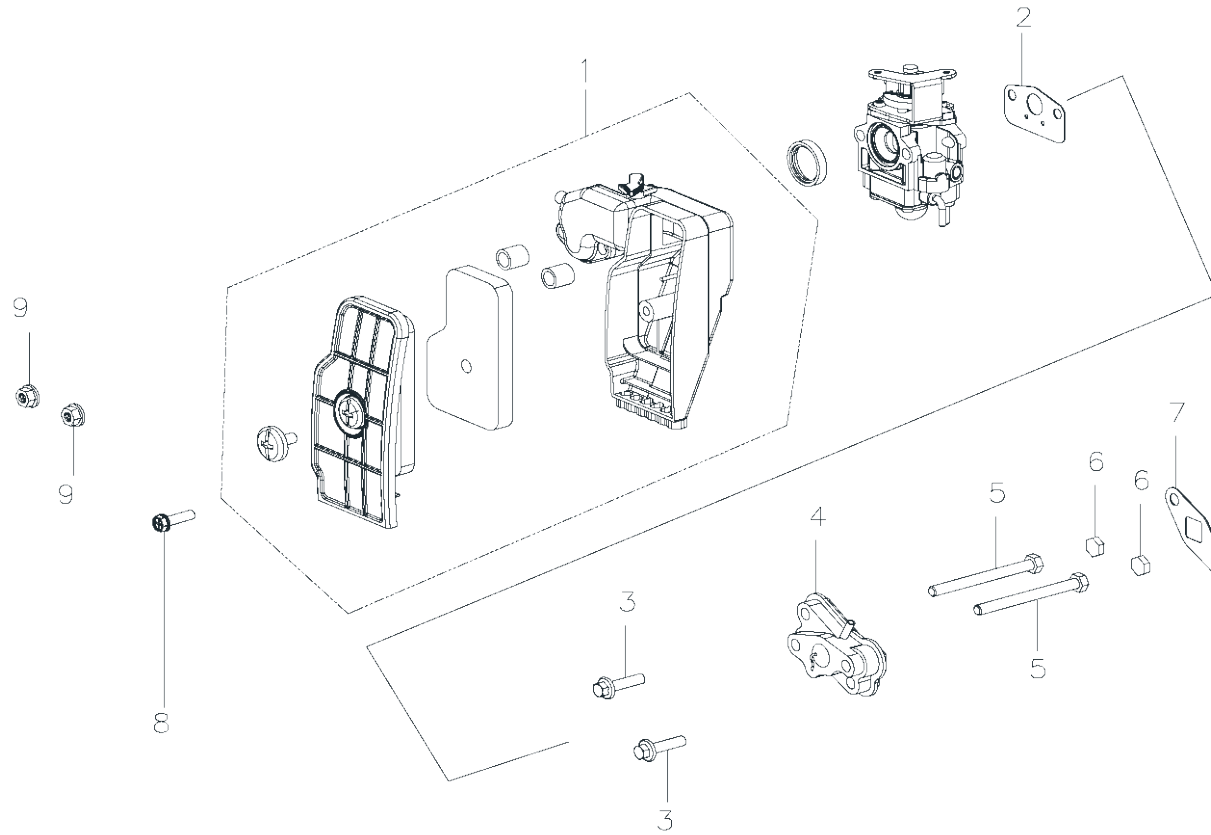


Number	Name
1	Connecting Rod
2	Woodruff Key
3	Piston Pin Clip
4	Piston Pin
5	Piston
6	Piston Ring

Number	Name
1	Dowel Bush
2	Camshaft
	Decompression of the pin
	Torsional spring
	Cover for cam
3	Rocker Gasket
4	Pin4 g4x20
5	Pin4 g6x30
6	Lower Rocker
7	Tappet
8	Upper Rocker
9	Pin 5 g6x32
10	Valve Spring Seat
11	Valve Spring
12	Intake Valve
13	Exhaust Valve

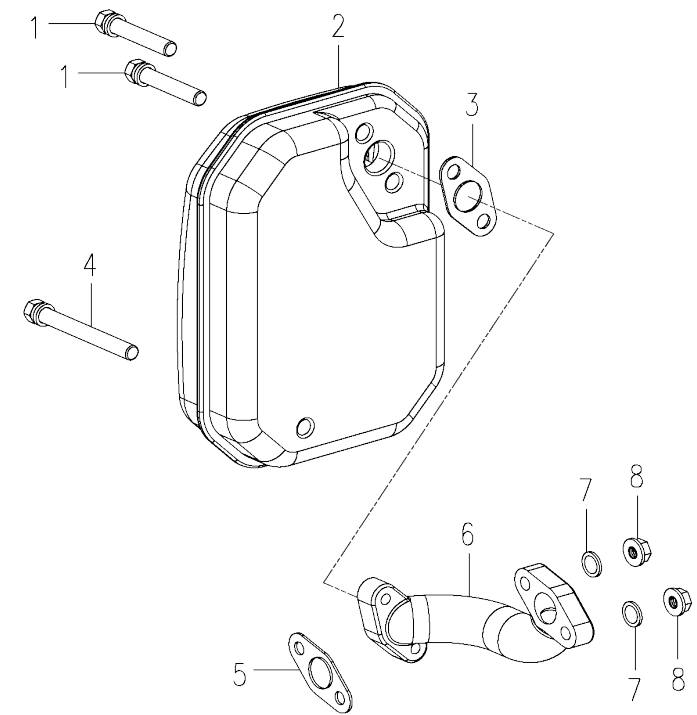
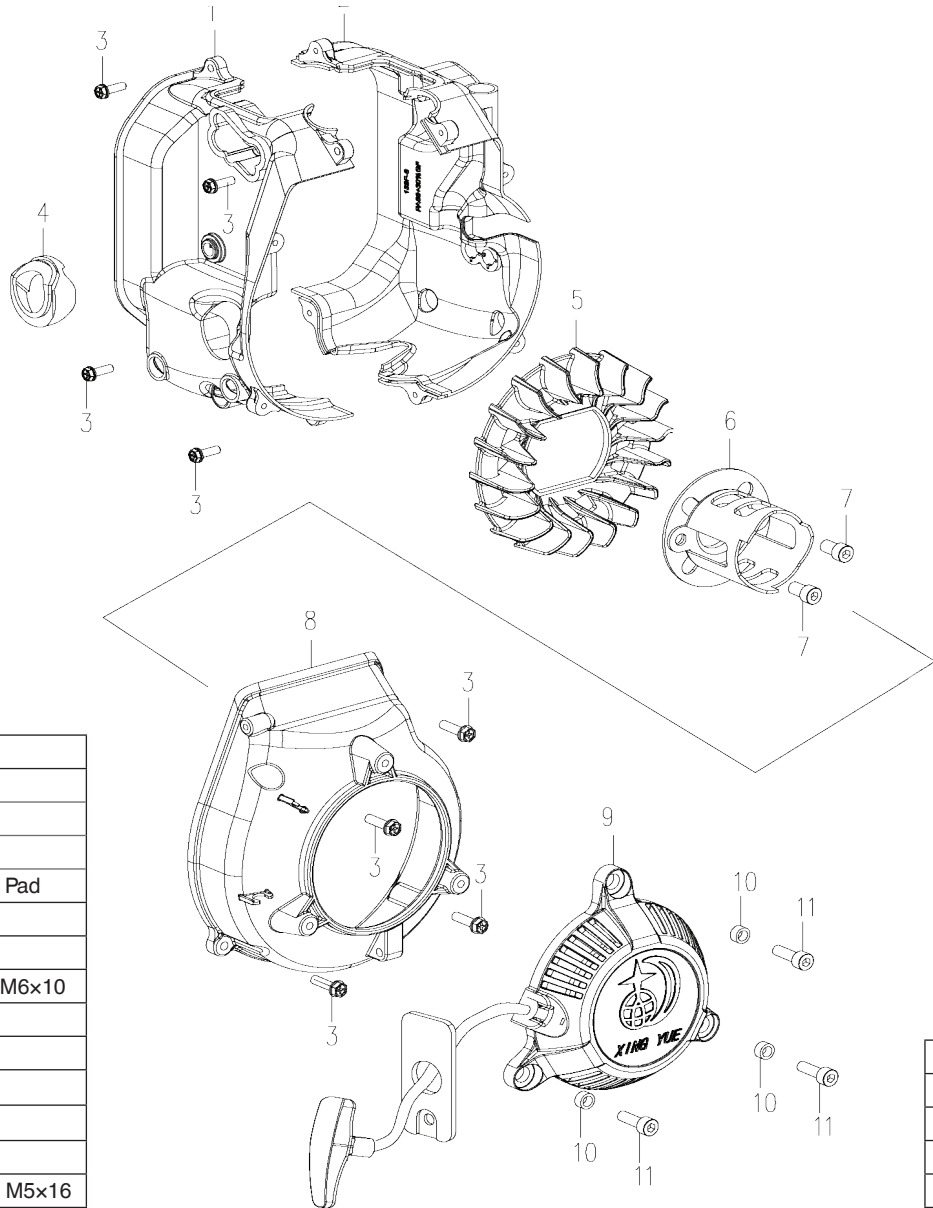


Number	Name	Number	Name
1	Deaerator	5	O Ring
2	Pipe Hoop 9	6	Hexagon Flange Bolt M5x16
3	Respiratory Tube	7	Upper Oil Pipe
4	Outlet Tube	8	Pipe Hoop 13



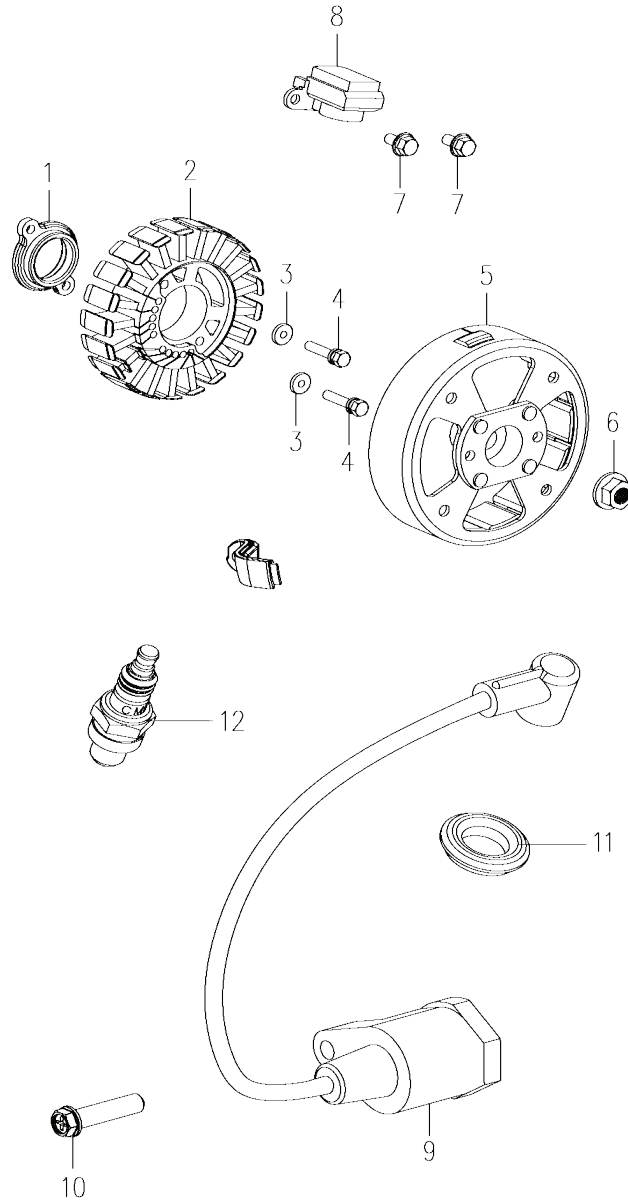
Number	Name	Number	Name	Number	Name
1	Air Filter	3	Hexagon Flange Bolts M5x22	7	Insulation Board Gasket
	Foam	4	Insulation Board Components	8	Hexagon Flange Bolts M5
	big head chrome plated Screw	5	Hexagon Flange Bolts M5x55	9	Tap Screw ST4.8x16-FH
2	Gasket of Carburator	6	Block rubber		

Number	Name
1	Carburator



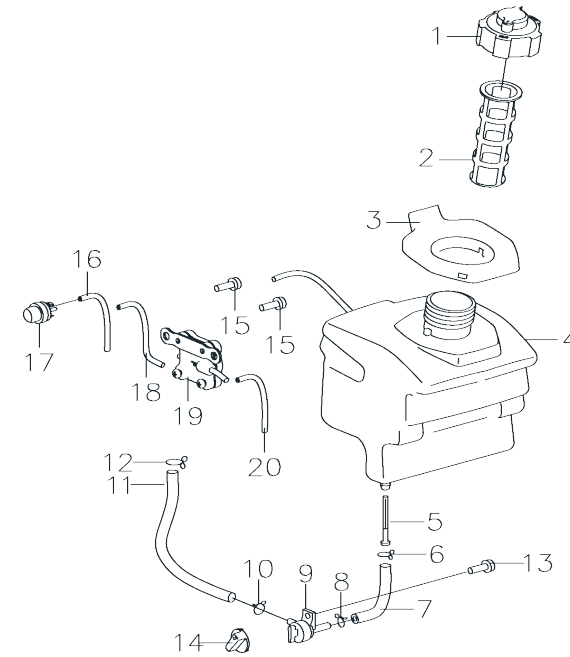
Number	Name
1	Air Guide Sleeve A
2	Air Guide Sleeve B
3	Tap Screw ST4.8×16
4	Oil Filler Hole Airproof Pad
5	Cooling Fan
6	Starting Hub
7	Inner Hexagon Screw M6×10
8	Fan Volute
9	Recoil Starter
	Handle
	Fender
10	Recoil Starter Bush
11	Hexagon Flange Bolts M5×16

Number	Name	Number	Name
1	Bolt M6×35	5	Muffler Gasket
2	Muffler	6	Muffler Pipe
3	Muffler Pipe Gasket	7	Washer 5
4	Bolt M6×55	8	Hexagon Flange Nut M5

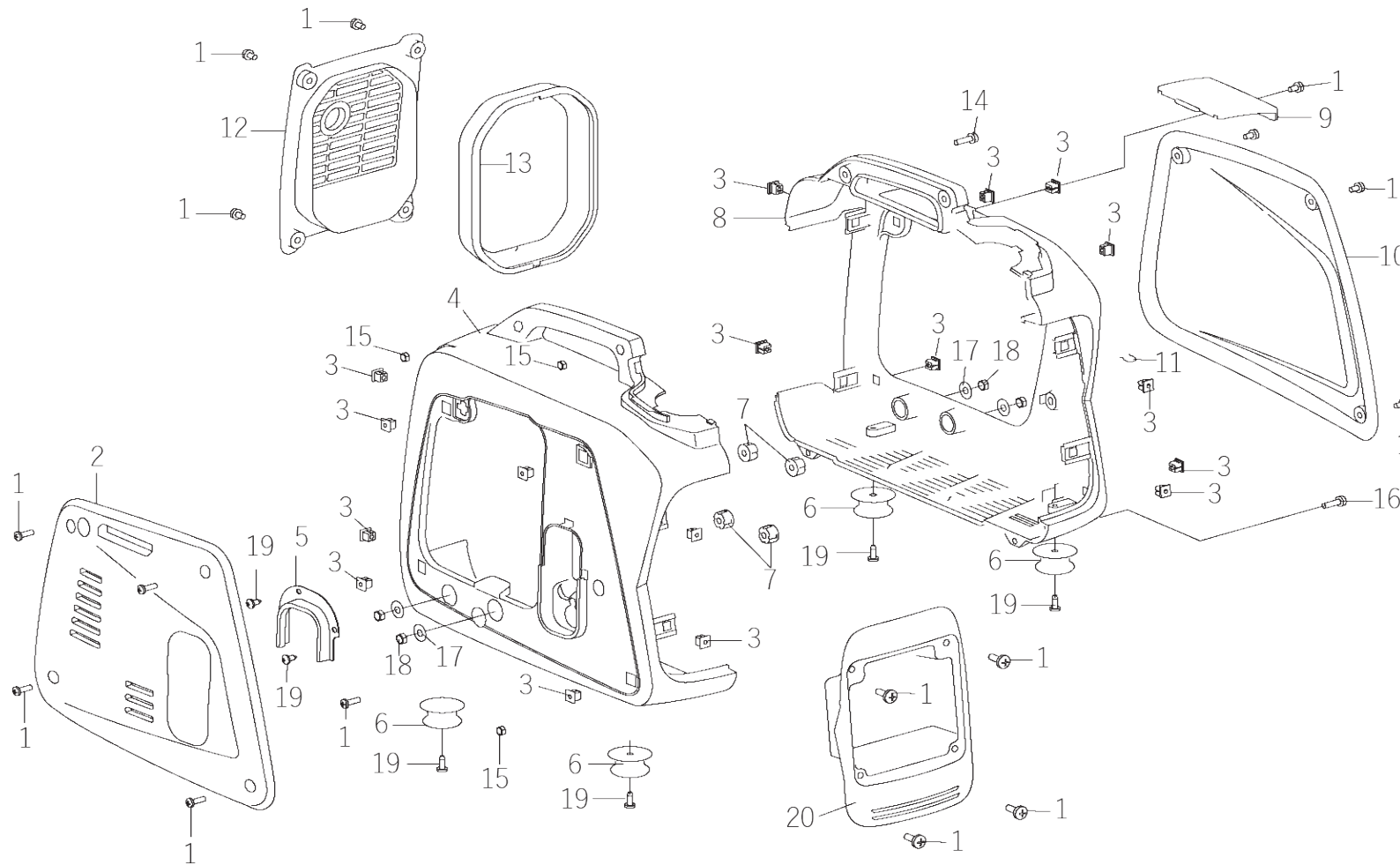


Number	Name
1	Locating Plate
2	Stator 0.8KW 420V 580Hz
3	Washer 5
4	Hexagon Flange Bolts M5x35
5	Rotor
6	Hexagon Flange Nut M10x1.25
7	Hexagon Flange Bolts M5x10
8	Trigger
9	Ignition Coil
10	Tap Screw ST4.8x25-FH
11	Ignition Coil Cap Seal
12	Spark Plug CMR6A

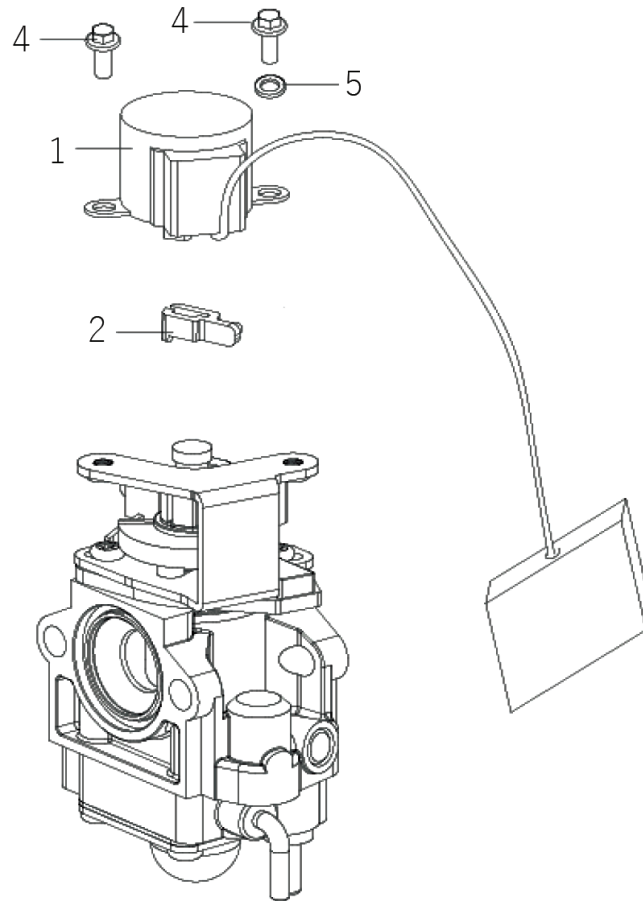
## POWER TOOLS



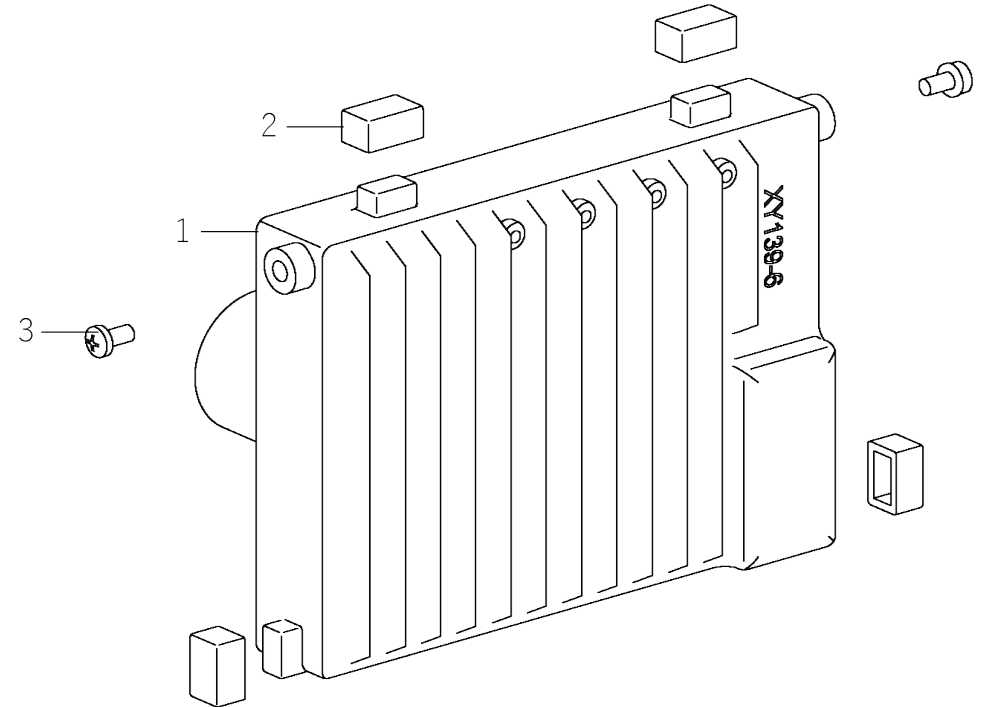
Number	Name	Number	Name
1	Fuel Tank Cap Assy.	11	Fuel Hose 4.5x7.5x180
2	Fuel Tank Filter	12	Steel Wire Clamp Ø7.5
3	Fuel Tank Port Rubber	13	Tap Screw GB/T845 ST4.8x13-F
4	Fuel Tank	14	Fuel Cock Knob
5	Fuel Outlet Filter	15	Tap Screw GB/T845 ST4.8x13-F
6	Steel Wire Clamp Ø11	16	Fuel Hose 2.5x5
7	Fuel Hose	17	Fuel Lubricator
8	Steel Wire Clamp Ø10	18	Fuel Hose 2.5x5
9	Fuel Cock	19	negative pressure pump
10	Steel Wire Clamp Ø9	20	Fuel Hose 2.5x5



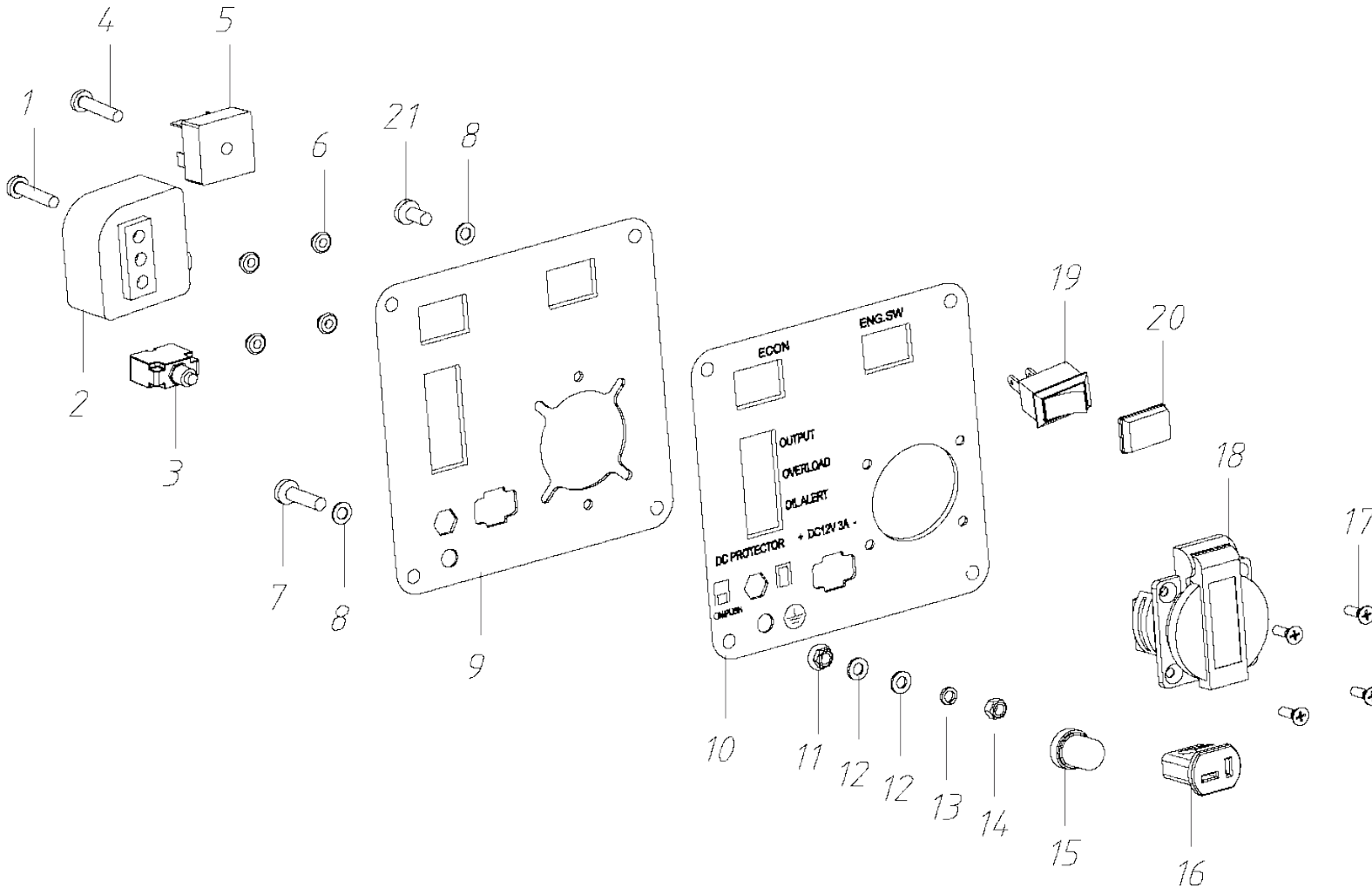
Number	Name
1	Screw 4.8x13-F
2	Right Side Cover
3	Fastener
4	Right Cover of Shell
5	Edge Protection
6	Vibration Absorber
7	Rubber Pad $\Phi 6 \times \Phi 16 \times 10$
8	Left Cover of Shell
9	Upper Cover
10	Left Side Cover
11	Clamp
12	Muffler Cover
13	Muffler Cover Seal
14	Screw GB/T9074.4 M5x18
15	Hexagon Nut M5
16	Cross Pan Head Screw M5x16
17	Rubber Pad $\Phi 6.5 \times \Phi 16 \times 2$
18	Lock Nut GB/T6187 M6
19	Tap Screw GB/T845 ST4.8x9.5-F
20	Panel Box



Number	Name
1	Stepper Motor
2	Drive Arm
3	Drive Arm Spring
4	Screw M4x6
5	Spring Washer 4



Number	Name
1	Inverter 0.7Kw 230V~50Hz
2	Inverter Gasket
3	Screw GB/T9074.4 M5x12



Number	Name
1	Cross Pan Head Screw M5x16
2	Ignition Control Module
3	Overload Protector 4.5A
4	Cross Pan Head Screw M5x16
5	Rectifier KBPC3502
6	Hexagon Flange Nut M4
7	Flange Bolt GB/16674 M5x16
8	Lock Gasket GB862.2 φ5
9	Panel Components
10	Panel Sticker
11	Hexagon Flange Nut M5
12	Flat Washer GB/T97 φ5
13	Spring Washer GB/T93 φ5
14	Hexagon Nut GB/T6170 M5
15	Water-Proof Cap of Protector
16	DC Charging Socket
17	Countersunk Head Screw M4x12
18	European Socket
19	Boat Switch
20	Water-Proof Cap of Boat Switch
21	Screw M5x8