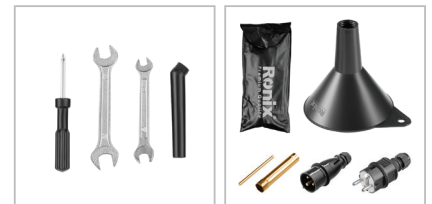


Gasoline Generator
7KW

RH-4707

- 420cc, 4-stroke high power 7kw engine with outstanding performance
- Large 28Liter full steel fuel tank provides up to 10 hours of run time
- Includes a selection of outlets for maximum compatibility in your applications including: two 220V AC outlets and one (12V) DC outlet
- Includes a voltmeter for measuring output voltage
- Special compact design for ease of use and reliable portability
- Covered, circuit breaker outlets for added protection
- Minimum sound and vibration in indoor usage
- 100% copper-wound generator head allows continuous operation without overheating
- Low oil alerting system for more protection of motor and longer lifetime
- Ideal for workshops and light-duty industrial usage



Engine	Model	RH-4707
	Model	HP190FE
	Type	4stroke Air Cooled Engine
	Displacement	420cc
	Rated Power	16HP
	Ignition System	CDI
	Start	E-Start
	Fuel Tank Capacity	28L
	Continuous Working	10h
	Fuel Type	Unleaded Petrol
Generator	Type	Single Phase
	Rated Voltage	220V
	Frequency	50Hz
	Winding Material	Copper
	Rated Amperage	26A
	Rated Power	6500W
	Max Power	7000W
	DC Output	12V

Weight	78Kg
Supplied in	Ronix Brown Carton
Include	Wheel, Handel, Screw and Nuts, Wrench, Spark Plug, Screwdriver, Plug, Base , Funnel