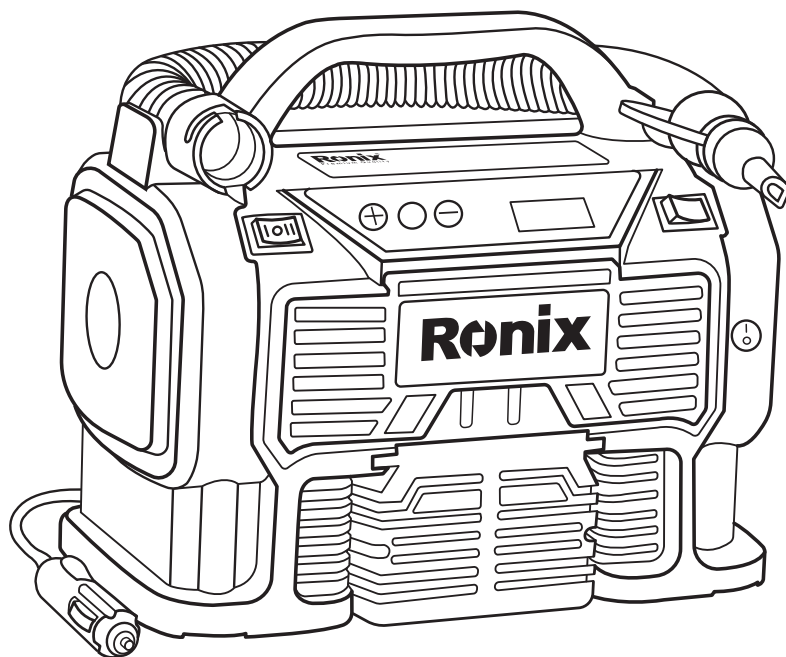


# Ronix<sup>®</sup>

Premium Quality

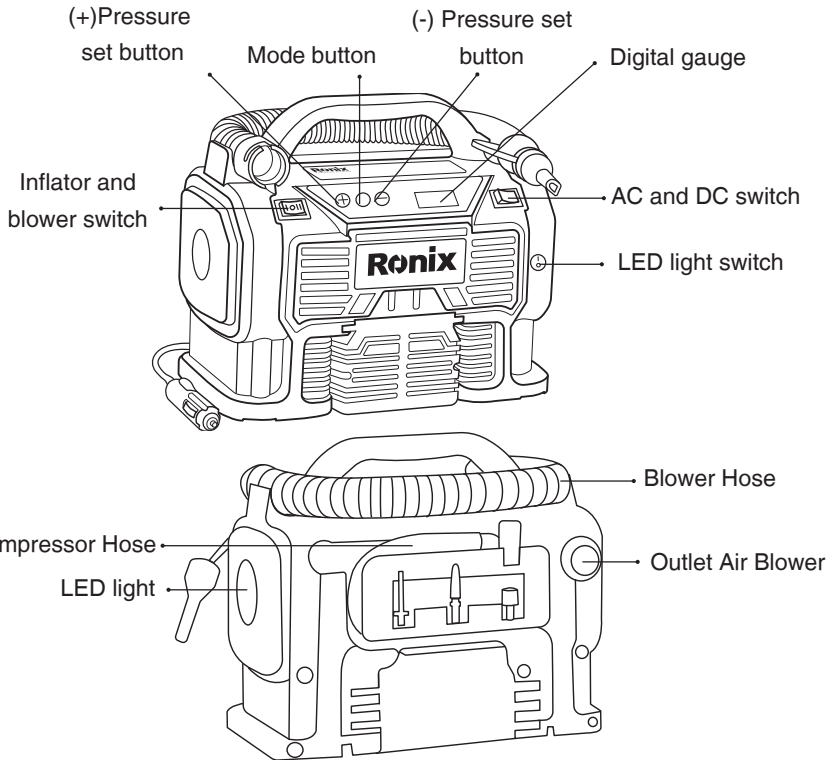
## MINI DIGITAL AIR COMPRESSOR RH-4261-RH-4261B



## SPECIFICATION

Model	RH-4261
Weight	2 Kg
Pump Hose Length	36cm
Inflator Hose Length	81cm
Max Pressure	160 PSI /11 Bar /1100 Kpa
Power Source	AC 220-240V 50-60Hz/ DC 12 Cigarette Lighter
Includes	Ball Adaptor, Tire Valve Adaptor, Air Bed Adaptor,- Flexible tube
Supplied in	Ronix color box

## PART LIST



## GENERAL POWER TOOL SAFETY WARNINGS

### WARNINGS!

Read all safety warnings and all instructions. Failure to follow the warnings and instructions may result in electric shock, fire and/or serious injury. Save all warnings and instructions for future reference.

The term “power tool” in the warnings refers to your mains-operated (corded) power tool or battery-operated (cordless) power tool.

## ■ WORK AREA SAFETY

Keep work area clean and well lit. Cluttered or dark areas invite accidents. Do not operate power tools in explosive atmospheres, such as in the presence of flammable liquids, gases or dust. Power tools create sparks which may ignite the dust or fumes.

Keep children and bystanders away while operating a power tool. Distractions can cause you to lose control.

## ■ ELECTRICAL SAFETY

-Power tool plugs must match the outlet. Never modify the plug in any way. Do not use any adapter plugs with earthed (grounded) power tools. Unmodified plugs and matching outlets will reduce risk of electric shock.

-Avoid body contact with earthed or grounded surfaces, such as pipes, radiators, ranges and refrigerators. There is an increased risk of electric shock if your body is earthed or grounded.

-Do not expose power tools to rain or wet conditions. Water entering a power tool will increase the risk of electric shock.

-Do not abuse the cord. Never use the cord for carrying, pulling or unplugging the power tool. Keep cord away from heat, oil, sharp edges or moving parts. Damaged or entangled cords increase the risk of electric shock.

-When operating a power tool outdoors, use an extension cord suitable for outdoor use. Use of a cord suitable for outdoor use reduces the risk of electric shock.

-If operating a power tool in a damp location is unavoidable, use a residual current device (RCD) protected supply. Use of an RCD reduces the risk of electric shock.

## ■ PERSONAL SAFETY

-Stay alert, watch what you are doing and use common sense when operating a power tool. Do not use a power tool while you are tired or under the influence of drugs, alcohol or medication. A moment of inattention while operating power tools may result in serious personal injury.

- Use personal protective equipment. Always wear eye protection. Protective equipment such as dust mask, non-skid safety shoes, hard hat, or hearing protection used for appropriate conditions will reduce personal injuries.
- Prevent unintentional starting. Ensure the switch is in the off-position before connecting to power source and/or battery pack, picking up or carrying the tool. Carrying power tools with your finger on the switch or energising power tools that have the switch on invites accidents.
- Remove any adjusting key or wrench before turning the power tool on. A wrench or a key left attached to a rotating part of the power tool may result in personal injury.
- Do not overreach. Keep proper footing and balance at all times. This enables better control of the power tool in unexpected situations.
- Dress properly. Do not wear loose clothing or jewellery. Keep your hair, clothing and gloves away from moving parts. Loose clothes, jewellery or long hair can be caught in moving parts.
- If devices are provided for the connection of dust extraction and collection facilities, ensure these are connected and properly used. Use of dust collection can reduce dust-related hazards.

## **POWER TOOL USE AND CARE**

- Do not force the power tool. Use the correct power tool for your application. The correct power tool will do the job better and safer at the rate for which it was designed.
- Do not use the power tool if the switch does not turn it on and off. Any power tool that cannot be controlled with the switch is dangerous and must be repaired by Ronix Service Center.
- Disconnect the plug from the power source and/or the battery pack from the power tool before making any adjustments, changing accessories, or storing power tools. Such preventive safety measures reduce the risk of starting the power tool accidentally.
- Store idle power tools out of the reach of children and do not allow persons

unfamiliar with the power tool or these instructions to operate the power tool. Power tools are dangerous in the hands of untrained users.

-Maintain power tools. Check for misalignment or binding of moving parts, breakage of parts and any other condition that may affect the power tool's operation. If damaged, have the power tool repaired before use. Many accidents are caused by poorly maintained power tools.

- Keep cutting tools sharp and clean. Properly maintained cutting tools with sharp cutting edges are less likely to bind and are easier to control.

- Use the power tool, accessories and tool bits etc. in accordance with these instructions, taking into account the working conditions and the work to be performed. Use of the power tool for operations different from those intended could result in a hazardous situation.

## **SERVICE**

- Have your power tool serviced by Ronix Service Center using only identical replacement parts. This will ensure that the safety of the power tool is maintained.

## **ADDITIONAL SAFETY WARNINGS FOR YOUR INFLATOR**

1-Know your inflator. Read operator's manual carefully. Learn its applications and limitations, as well as the specific potential hazards related to this inflator.

2-Inflate items only to their manufacturer's recommendations. Exceeding the pressure rating could cause them to explode resulting in personal injury.

3-Operate only with the accessories included or those rated for 160 PSI / 11BAR or higher. The use of any accessory not recommended for use with this tool could be hazardous.

4-Operate inflator away from any wall or object that could restrict the flow of fresh air to ventilation openings.

5-Inspect inflator for cracks, pin holes, or other imperfections that could

- cause inflator to become unsafe. Never cut or drill holes in the inflator.
- 6-Make sure the hose is free of obstructions or snags. Entangled or snarled hoses can cause loss of balance or footing and may become damaged.
- 7-Use the inflator only for its intended use. Do not alter or modify the inflator from the original design or function.
- 8-Since the vibration produced by the inflator may cause it to “walk”, do not operate on a high shelf or
- other surface. Operate at ground or bench level.
- 9-Never leave the inflator unattended during inflation.
- 10-Do not attempt to pull or carry the inflator by the hoses.
- 11-The compressed air from your inflator is not safe for breathing. Never inhale air from your inflator or from a breathing device connected to the inflator.
- 12-Never direct a jet of compressed air toward people or animals. Take care not to blow dust and dirt towards yourself or others.
- 13-Wear a face or dust mask if the operation is dusty.
- 14-Carefully monitor objects during inflation.
- 15-Turn off and unplug inflator when not in use, when cleaning, or when changing nozzles.
- 16-Inflator can become hot during use. Allow inflator to cool for ten minutes after each ten minutes of continuous use. Allow inflator to cool 30 minutes before storing away.
- 17-Do not operate inflator when car engine is running.

## **SYMBOLS**




To reduce the risk of injury, user must read instruction manual





Double insulation Warning



Warning!

 Wear ear protection

 Wear eye protection

 Wear dust mask

## OPERATING INSTRUCTIONS

### **NOTE!**

Before using the tool, read the instruction manual carefully.

## INTENDED USE

This tool is designed to be used in most vehicles from the standard 12-volt socket or in 220-240 volt cord to inflate car, motorcycle and bike tires, balls, rafts, air mattresses, swimming pool floats, etc. It is also used to deflate the rafts, air mattresses, swimming pool floats, and other low-pressure items requiring large quantities of air.

## BEFORE USING YOUR INFLATOR

Too much air pressure causes a hazardous risk of bursting. Check the manufacturer's maximum pressure rating for objects being inflated.

### **AC OR DC SWITCH**

Always fully extend the 100V-240V cord or 12V cord before each use.

To turn the inflator on, plug into the 220-240 volt socket or plug into the 12 volt adaptor into your vehicle's 12 volt accessory socket and press the left part of the switch marked »AC« or press the right part of the switch marked »DC«.

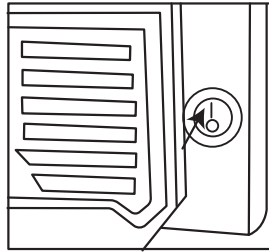




To turn the inflator off, press the right part of the switch marked "DC" to cut off AC power supply. Press the left part of the mode switch marked "AC" to cut off DC power supply.

## LEDLIGHT SWITCH

To turn the LED light on, press the upper part of the LED light switch marked "I" (See Fig 5) or press the left part of the LED light switch marked



## INFLATOR AND BLOWER SWITCH

This three-position switch operates the Inflator and blower function. Place the switch in the :

(I) position to turn on the inflator function. Place the switch in the (II) position to turn on the blower function. When the switch is in the center position (0), all pump operations are off.



## DIGITAL GAUGE

Your Inflator is equipped with a built-in digital gauge that will automatically shut off when a predetermined air pressure is reached. The digital gauge is multifunctional serving as a pressure gauge, monitoring the amount of

pressure being applied to the item being inflated, pressure is indicated by PSI, BAR or KPA.

Press the mode button to turn on the digital gauge.

Press the mode button to switch between the different units (PSI, BAR or KPA) .

Press the(+) or(-) button at the same time until the required units are displayed.

Note: If the AC or DC switch is turned off, the digital gauge be extinguished, all pressure settings will be lost and will need to be reentered.

Note: The digital gauge will only show inflation pressures when the inflator is being used.

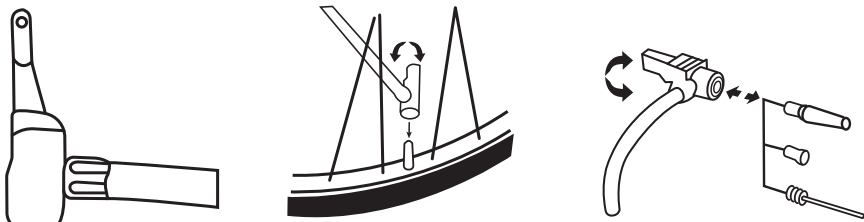


## UNIVERSAL VALVE ADAPTOR

To operate the valve adaptor, position the lever straight up.

Push the valve adaptor down over the threaded section of the valve stem, or one of the three accessories provided with your inflator.

When the adaptor is down all the way over the threads, press the lever down with your finger to lock it in place.



Make sure that the universal valve adaptor is firmly locked in place before turning the Inflator on.

To release the adaptor, lift the lever straight up and pull the adaptor off.

Note: Always make sure that the lever is in the up position when not in

use. Operate your inflator only with the universal valve adaptor or with the included nozzles.

Inflating with the high pressure hose

The valve adaptor on the high pressure hose can be used without adaptors to inflate tires.

 **WARNING!**

Do not operate the inflator when the car engine is running.

 **WARNING!**

Do not leave unit running unattended. Over inflation of tires and other items could result in serious injury and property damage.

 **NOTE!**

Make sure that your 12 Volt accessory socket is live. On some vehicles the accessory socket may only become live when the ignition key is in the accessory position.

 **NOTE!**

When inflating items of 10PSI /0.7BAR or less, inflate in short bursts and check after each burst by feel or with a calibrated measuring device to determine accurate pressure.

Press mode button to activate.

Set desired pressure.

Place valve adaptor on valve stem and lock in place.

Press the low pressure and high pressure switch to start inflating. When the desired pressure is reached, the inflator will automatically turn off. This is a safety feature to prevent the risk of items over inflating.

## **USING THE INFLATOR AS A PRESSURE GAUGE**

Press mode button to activate.

Connect the universal valve adaptor to the item to be checked.  
The digital gauge will display the items pressure.

## **HOSE AND CORD STORAGE**

When not in use, the high pressure hose are stored in the storage area on back of the Inflator. The low pressure hose are stored in the storage area on top of the Inflator. The cords are stored in the storage area on bottom of the Inflator.

## **ACCESSORIES STORAGE**

When not in use, adaptors and needles provided with the inflator can be placed in the storage area located on back of the Inflator.

## **REPLACING THE FUSE IN THE VEHICLE DC ACCESSORY PLUG**

Remove the cap by turning it counterclockwise.

Remove the center pin.

Remove the fuse.

Fit a new fuse of the same type and size (10A/250V).

Refit the cap and center pin.

Tighten the cap by turning clockwise onto the plug.





**Ronix**<sup>®</sup>  
Premium Quality

[www.ronixtools.com](http://www.ronixtools.com)