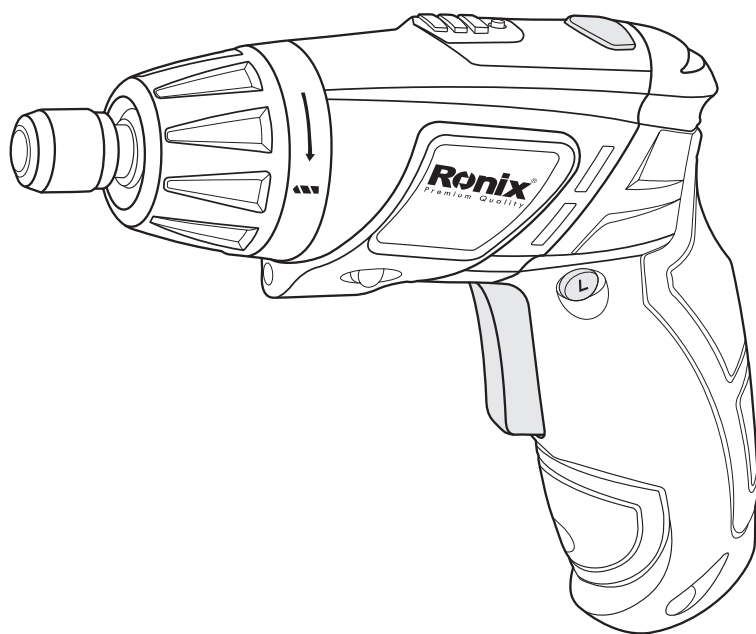


Ronix[®]

Premium Quality

CORDLESS SCREWDRIVER

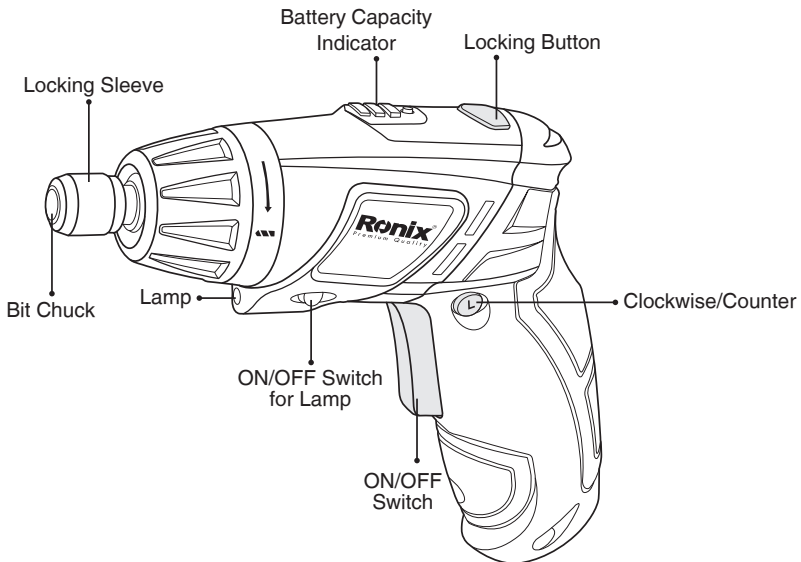
8536



PRODUCT SPECIFICATIONS

Model	8536
Battery Chemistry	Lithium-Ion
Battery Voltage	3.6V
Max Torque	3NM
Weight	600gr
Chuck Capacity	6.25mm-1/4 inch
Battery Capacity	1.5Ah
No-Load Speed	200RPM
Battery Charging Time	3to5 Hours
Supplied in	BMC
Includes	1 fast charger, 117 Accessories

PARTS LIST



Caution- Read the operating instructions to reduce the risk of injury”
Wear ear-muffs.

The impact of noise can cause damage to hearing.

WEAR SAFETY GOGGLES

Sparks generated during working or splinters, chips and dust emitted by the device can cause loss of sight.

Warning!

This item is suitable for working situation with above zero degree temperature.

IMPOTRTAT!

When using equipment, a few safety precautions must be observed to avoid injuries and damage.

Please read the complete operating manual with due care. Keep this manual in a safe place, so that the information is available at all times. If you give the equipment to any other person, give them these operating instructions as well.

We accept no liability for damage or accidents which arise due to non-observance of these instructions and the safety information.

■ SAFETY INFORMATION

Please refer to the booklet included in delivery for the safety instructions.

CAUTION!

Read all safety regulations and instructions.

Any errors made in following the safety regulations and instructions may result in an electric shock, fire and/or serious injury.

Keep all safety regulations and instructions in a safe place for future use.

Items supplied Open the packaging and take out the eqwith care.

Remove the packaging material and any packaging and/or transportation

braces (if available). Check to see if all items are supplied inspect transport damage. If possible, please keep the packaging end of the guarantee period.

IMPOTRTAT!

The equipment and packaging material are not toys. Do not let children play with plastic bags, foils or small parts there is a danger of swallowing or suffocating! Cordless screwdriver Battery cl

■ PROPER USE

The cordless screwdriver is designed for tightening and undoing screws. The machine is to be used only for its prescribed purpose. Any other use is deemed to be a case of misuse. The user/operator and not the manufacturer will be liable for any damage or injuries of any kind caused as a result of this.

Please note that our equipment has not been designed for use in commercial, trade or industrial applications. Our warranty will be voided if the machine is used in commercial, trade or industrial businesses or for equivalent purposes.

■ WEAR EAR – MUFFS

The impact of noise can cause damage to hearing.

Total vibration values (vector sum of three directions)

Determined in accordance with EN 60745).

Screwing without hammer action

Vibration emission value ah 0,153 m/s²

K uncertainty= 1,5m/s

ADDITIONAL INFORMATION FOR ELECTRIC POWER TOOLS

WARNING!

The specified vibration value was established in accordance with a standardized testing method. It may change according to how the

electric equipment is used and may exceed the specified value in exceptional circumstances.

The specified vibration value can be used to compare the equipment with other electric power tools.

The specified vibration value can be used for initial assessment of a harmful effect.

Keep the noise emissions and vibrations to a minimum. Only use appliances which are in perfect working

Order. Service and clean the appliance regularly. Adapt y

Necessary. Switch the appliance off when it is not in use.

RESIDUAL RISKS

Even if you use this electric power tool in accordance with instructions, certain residual risks cannot be ruled out. The following hazards construction and layout:

- 1) Lung damage if no suitable protective dust mask is used.
- 2) Damage to hearing if no suitable ear protection is used.
- 3) Health damage caused by hand-arm vibrations if the equipment is used over a prolonged period or is not properly guided and maintained.

■ BEFORE STARTING THE EQUIPMENT

Be sure to read the following information before you use your cordless screwdriver for the first time:

- 1) Charge the battery pack with the charger supplied.
- 2) Only ever use screwdriver bits which are suitable for the purpose and in faultless condition.
- 3) Always check for concealed electric cables and gas and water pipes when drilling and screwing in walls.

OPERATION

■ CHARGING THE BATTERY

The battery is protected from exhaustive discharge. An integrated protective circuit automatically switches off the equipment when the battery is flat. In this case the bit chuck will cease to turn.

WARNING!

Do not press the ON/OFF switch any more if the protective circuit has actuated. This may damage the battery.

1) Check that your mains voltage is the same as that marked on the rating plate of the battery charger. Plug the battery charger in the plug socket and connect the charging cable to the charging connection. The charging process. Starts as soon as the charging cable is connected to the charging adapter.

2) The red LED (7) will come on to indicate that the battery pack is being charged.

3) The charging control lamp (7) goes out when charging is completed. Important! The handle may become a little warm during the charging process. This is normal.

If the battery pack fails to charge, please check

- Whether there is voltage at the socket-outlet
- and check for proper contact with the charging contacts in the battery charger.

If the battery still fails to charge, send

- The battery charger
- And the screwdriver

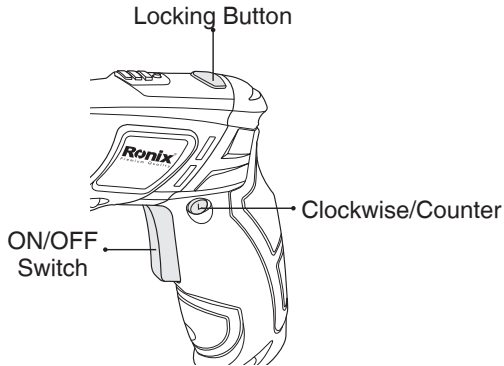
To our customer services department.

Timely recharging of the battery pack will help it serve you well for a long time. You must recharge the battery pack when you notice that the power of the screwdriver drops.

■CHANGEOVER SWITCH

The slide switch above the ON/OFF switch is for setting the direction of rotation of the cordless screwdriver and for preventing the cordless screwdriver from being switched on inadvertently. You can select between

clockwise and counter-clockwise rotation. Change the direction of rotation only when the equipment is at a standstill. If you fail to observe this point, the gearing may become damaged. When the slide switch is in the middle position, the ON/OFF switch is blocked.

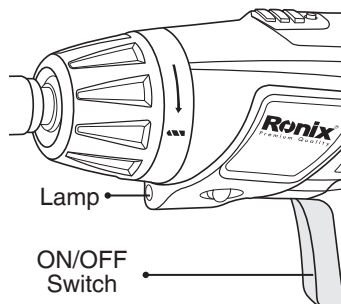


ON/OFF SWITCH

Press the On/Off switch to switch the cordless screwdriver on. Release the ON/OFF switch to switch off the tool.

LED LAMP

The LED lamp can be used in poor lighting conditions to illuminate the area where you want to screw. To switch and to switch OFF press the switch again.



ANGLE SETTING

The screwdriver can be locked into 2 different angle settings. To do so, press the locking button and move the screwdriver into the desired position. Then release the locking button.

Important. Before you switch on the screwdriver, make sure that it is correctly locked in the angle position in question.

BATTERY CAPACITY INDICATOR

Press the button for the battery capacity indicator.

The battery capacity indicator indicates the charge state of the battery on colored LEDs.

■ ALL LEDS ILLUMINATE

The battery is fully charged.

The yellow and red LED illuminate:

The battery has an adequate remaining charge.

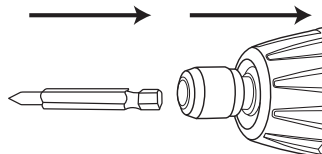
■ RED LED

The battery is empty, recharge the battery.

■ CHANGING THE TOOL

Important! Set the changeover switch to its centre position whenever you carry out any work (for example changing the tool, maintenance work, etc.) on the cordless screwdriver.

Pull back and hold the locking sleeve. Check that it is secure by attempt tool apart again.



SCREWDRIVING

We recommend using self-centering screws (e.g. Torx screws, recessed head screws) designed for reliable working. Be sure to use a bit that matches the screw in shape and size. Set the torque, as described elsewhere in these operating instructions, to suit the size of screw.

Cleaning, maintenance and ordering of spare parts

Always pull out the mains power plug before starting any cleaning work.

CLEANING

Keep all safety devices, air vents and the motor housing free of dirt and dust as far as possible. Wipe the equipment with a clean cloth or blow it with compressed air at low pressure.

We recommend that you clean the device immediately each time you have finished using it.

Clean the equipment regularly with a moist cloth and some soft soap. Do not use cleaning agents or solvents; these could attack the plastic parts of the equipment. Ensure that no water can seep into the device

MAINTENANCE

There are no parts inside the equipment which require additional maintenance.

ORDERING REPLACEMENT PARTS

Type of machine

Article number of the machine

Identification number of the machine

Replacement part number of the part required

For our latest prices and information please go to www.isc-gmbh.

■ DISPOSAL AND RECYCLING

The unit is supplied in packaging to prevent its being damaged in transit. This packaging is raw material and can therefore be reused or can be returned to the raw material system.

The unit and its accessories are made of various types of material, such as metal and plastic. Defective components must be disposed of as special waste. Ask your dealer or your local council.

Storage Store the equipment and accessories out of children's reach in a dark and dry place at above freezing temperature. The ideal storage temperature is between 5 and 30 C. Store the electric tool in its original packaging.

Ronix[®]
Premium Quality