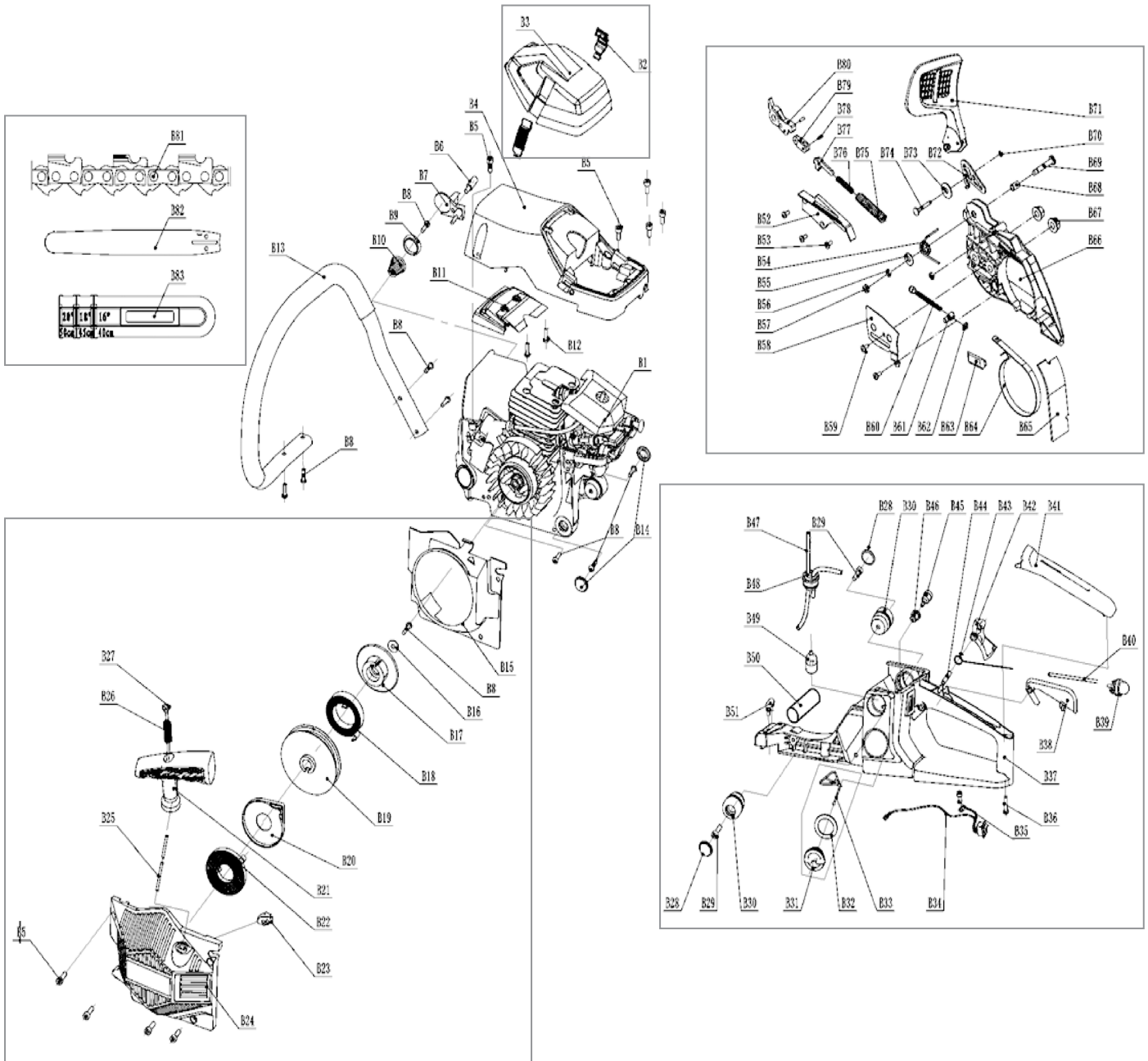


MOTOR			
Number	Name	Number	Name
A01	holding circle	A44	inter pipe supporter gasket
A02	bolt M5X12	A45	inter pipe supporter
A03	inter pipe	A46	inter pipe supporter oaoer oad
A04	inter pipe paper pad	A47	air admission flange
A05	cylinder	A48	carburetor
A06	spark plug	A49	accelerator throwout lever
A07	bolt M5X20	A50	inlet angle pipe
A08	bolt M5X85	A51	inter pipe dampfer
A09	muffler paper pad	A52	bolt M5X50
A10	muffler	A53	bolt GM5-M5X38
A11	muffler lap	A54	air filter seal circlip
A12	NUT M5	A55	air filter
A13	Cylinder gasket	A56	butterfly lock mother
A14	piston ring	A57	bolt M5X14
A15	piston	A58	choker rad
A16	piston pin elastic ring	A59	choker rad damping cover
A17	piston pin	A60	choker rad seat
A18	roller bearing elastic ring	A61	oil seat Ø15XØ28X5
A19	roller bearingØ11X-Ø15X12.5	A62	oilpump lap
A20	crank	A63	bolt M4X10
A21	woodruff key 3X10	A64	worm bearing adjuster
A22	high-pressure cap	A65	roller bearing
A23	high-pressured package	A66	sprocket
A24	bolt M5X18	A67	clutch cover
A25	board	A68	clutch adjust gasket
A26	seal circle	A69	clutch
A27	oil opercule	A70	bolt M4X14
A28	bolt M5X30	A71	oil out vitta
A29	nut M8X1	A72	oil pump
A30	fil wheel	A73	sponge sieve ring
A31	bolt M4X8	A74	oil inter pipe
A32	oil seal clamp	A75	oil filter element
A33	oil seal Ø15XØ35X7	A76	oil back plate
A34	in circlip Ø35	A77	chain plock guide
A35	bearing 6202	A78	bolt M8-M8X42
A36	short damping seat	A79	tooth hed rack
A37	left box body	A80	sponge mesh
A38	the left double damp- ing	A81	elastic ring
A39	whole box paper pad	A82	aerate mouth
A40	locating pin Ø5X10	A83	white wax pipe
A41	dustproof rubber plate	A84	negative pressure tube
A42	right box body	A85	Vacuum tube clamp
A43	the right double damping	A86	negative pressure mouth

4650

Gasoline Chain Saw 2300W



HOUSING			
Number	Name	Number	Name
B01	Engine Assy	B44	6X25 Pin
B02	Air filter lock	B45	Balancer
B03	Air filter cover	B46	Balancer sert
B04	Cylinder cover	B47	Fuel pipe
B05	M5X14 Bolt	B48	Pipe seat
B06	MX13 Bolt	B49	Fuel filter
B07	Chain catcher	B50	oil jug shock absorption
B08	ST5X14 Bolt	B51	Damper
B09	Spring support	B52	Cover
B10	Spring	B53	ST4X10 Screw
B11	Air deflector	B54	Spring
B12	ST4X8 Screw	B55	WasherØ6X16X1.5
B13	Front handle	B56	Snap ring Ø4
B14	Dust cover	B57	Rubber Ring
B15	Venti-Cover	B58	Tensioner cover
B16	WasherØ5X15X1.2	B59	ST4X10 Screw
B17	Starter wheel	B60	Screm
B18	Spring set	B61	Nut
B19	Rope wheel	B62	Retainer
B20	Coil spring cover	B63	Chain catcher
B21	Starter Knob	B64	Brake bard
B22	Spring	B65	Protector
B23	Rubber	B66	Chain cover
B24	Starter cover	B67	Nut M8
B25	Rope	B68	Cap
B26	Spring	B69	Pin
B27	Rope clip	B70	Ø3 Snap ring
B28	Dust cover	B71	Front guard
B29	M5X12 bolt	B72	Plate
B30	Damper	B73	WasherØ6X20X1.2
B31	Fuel cap	B74	Pin
B32	Fuel cap seal	B75	Brake spring
B33	Fuel cap locker	B76	Brake spring
B34	E-switch	B77	Slide arm
B35	M5X12 bolt	B78	Pin Ø3X8
B36	M5X20 Bolt	B79	Brake lever
B37	Fuel rank	B80	Brake lever
B38	Throttle Handle	B81	Saw chain
B39	FUEL PIPE	B82	Bar
B40	Pipe seat 3X5X130	B83	Chain cover
B41	Rear handle cover		
B42	Throttle level		
B43	Throttle Spring		